

# ***Track Leaderboard***

## **Software Instructions**

### **Installation Instructions**

*Track Leaderboard* is compatible with Windows XP, 7, 8, 8.1, and 10. It is compatible with Eliminator Next Gen Test Track version 1.11PT and later.

- 1.) Insert the *Track Leaderboard* CD into your computer
- 2.) Open the CD drive
- 3.) Double click "setup.exe"
- 4.) Follow the prompts to install *Track Leaderboard* on your computer

### **Networking Instructions**

*Track Leaderboard* can be installed on multiple computers and networked so that one computer is registering new users while another computer is running races and maintaining the leaderboard. To setup computers for networking, perform the following steps on each computer:

- 1.) Open "Control Panel"
- 2.) Click "Network and Sharing Center"
- 3.) Click "Change advanced sharing settings"
- 4.) For your current profile, perform the following:
  - a. Select "Turn on network discovery" and check "Turn on automatic setup of network connected devices"
  - b. Select "Turn on file and printer sharing"
  - c. Under public folder sharing select "Turn on sharing so anyone with network access can read and write files in the Public folders"
  - d. Under password protected sharing select "Turn off password protected sharing"

Note: In Windows 10, some of these settings may be under "All Networks"

**Note:** Portatree highly recommends that computers be on a **private** network when using the above settings. If on a public network, use the settings at your own risk.

### **General Setup**

Before using the *Track Leaderboard* software, the "Registration" number and communication "Port" for the Eliminator must be entered. If you are only using the software for "Name Entry" only the "Registration" number is necessary.

The **Registration Number** for SN \_\_\_\_\_ is \_\_\_\_\_

### **Name Entry**

The "Name Entry" button on the *Track Leaderboard* main screen will lead to the user registration panel. On the "Name Entry" screen you will find the following:

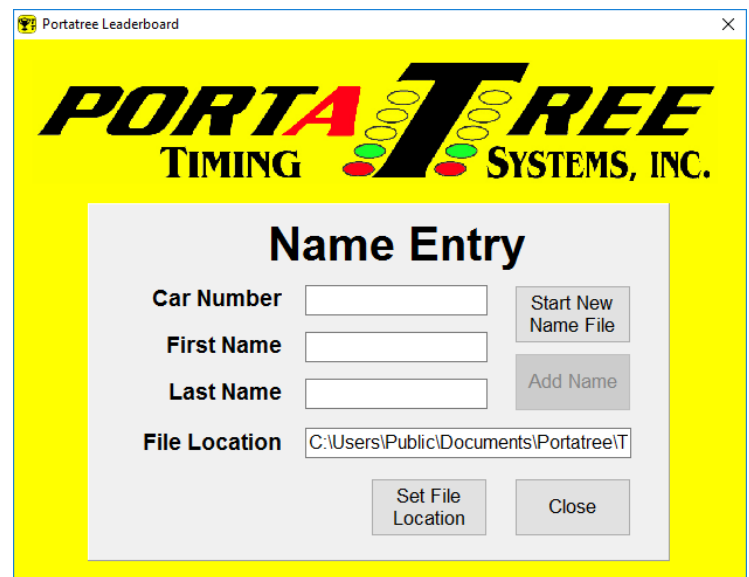
**File Location:** Location of the "Name File". Unless switching computers or networks, "File Location" should only need to be set the first time using the *Track Leaderboard* program. If "File Location" is set incorrectly, the leaderboard "Name" field will be blank. See instructions below for setting "File Location".

**Start New Name File:** Deletes current "Name File" and starts a new "Name File".

**Car Number:** Each user must have a unique 1 to 5 digit alphanumeric “Car Number”. “BYE” cannot be used as a car number. If the same “Car Number” is entered twice, you will be asked to replace the original. This can be used to edit an entry that was entered incorrectly.

**First and Last Name:** First and Last Name of user associated with the car number.

**Add Name:** Once a valid Car Number, First Name, and Last Name are entered, Add Name will activate and add the user to the “Name File.”



#### **Setup File Location when using Track Leaderboard on a single computer:**

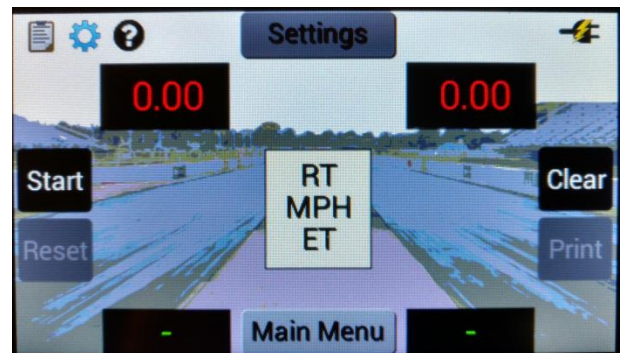
- File Location should be set to “C:\Users\Public\Documents\Portatree\TTLeaderboard”
- This is the default location, but if it is not set click “Set File Location” to navigate to this location
- Note: “Public Documents” is located under C >> Users >> Public >> Public Documents

#### **Setup File Location when using Track Leaderboard on a network:**

- File Location should be set to the “TTLeaderboard” folder on the computer running the races and maintaining the leaderboard
- Click “Set File Location”
- Click “Network”
- Select the computer that is running races/maintaining the leaderboard
- Navigate to Users >> Public >> Public Documents >> Portatree >> TTLeaderboard
- Click “Select Folder”

### **Connecting to Eliminator**

- 1.) Connect the Eliminator Next Gen to a computer
  - a. The Eliminator Next Gen USB port is on the top left of the device
- 2.) Turn on the Eliminator Next Gen
- 3.) Open *Track Leaderboard* on your computer
- 4.) On the Eliminator Next Gen, navigate to the “Test Track” main race screen
- 5.) Click the “Connect” button in *Track Leaderboard*
  - a. The “Race Control” panel should appear in *Track Leaderboard* and the Eliminator Next Gen should display “Connected” under “Settings”
- 6.) If the program fails to connect to the Eliminator Next Gen, check the Port number entered
  - a. Open “Device Manager”
    - i. Windows XP: Open Control Panel >> System >> Hardware >> Device Manager
    - ii. Windows 7: Open Control Panel, select “View by Small Icons”, click Device Manager
    - iii. Windows 8 to 10: Right click the Windows icon, select Device Manager
  - b. Expand “Ports (COM & LPT)”
  - c. Find “Communication Device Class ASF Example” and write down the COM number
  - d. In *Track Leaderboard* enter the COM number from Step C into the “Port” box



Step 4: Test Track Main Race Screen

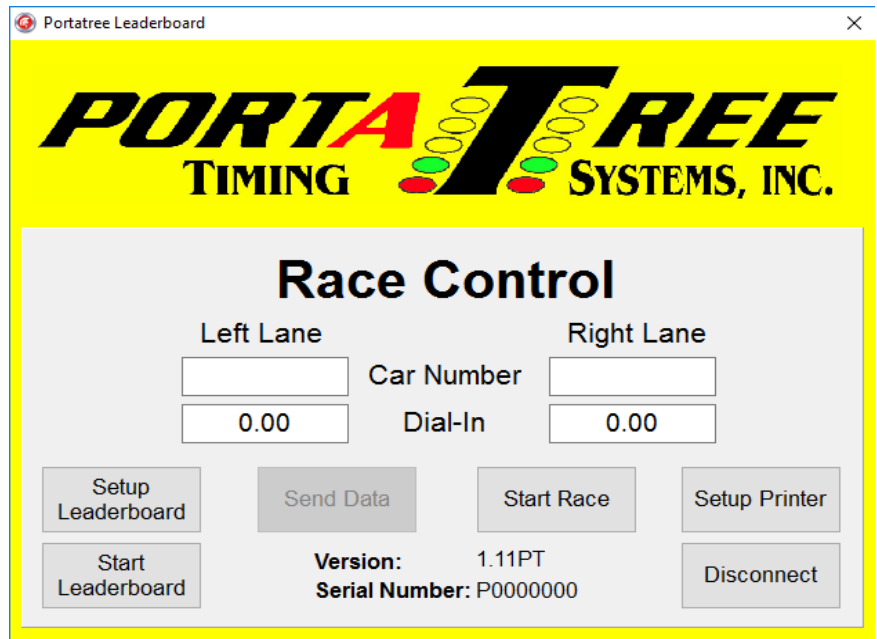
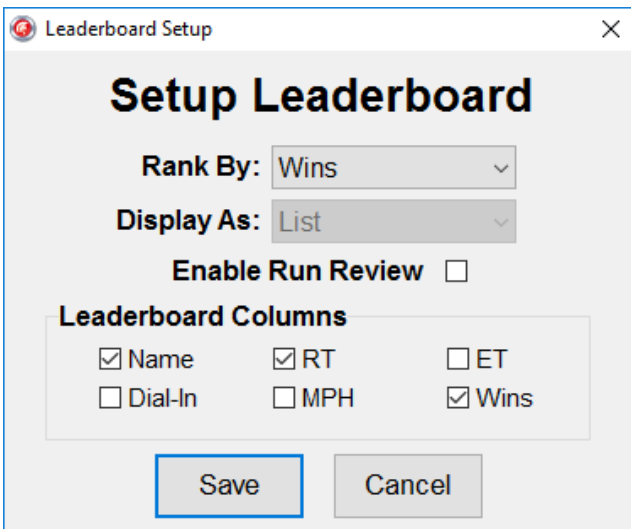
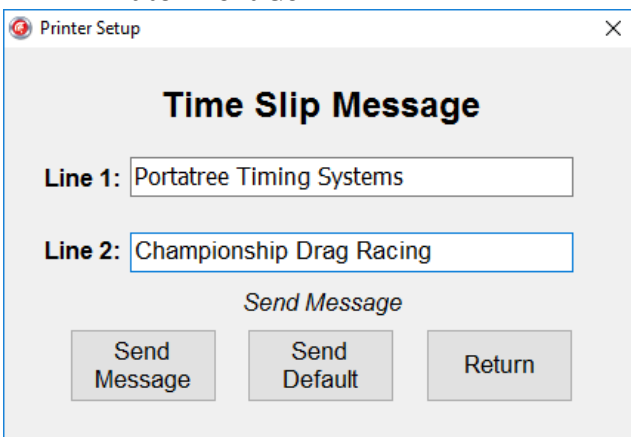
e. Repeat Step 5

## Race Control

The “Race Control” screen handles all communication between the Eliminator Next Gen and the Leaderboard. Currently *Track Leaderboard* will only work when the Eliminator Next Gen is configured as a Dual Lane Test Track with Auto Start off.

**Disconnect:** Click to disconnect from the Eliminator Next Gen.

**Setup Printer:** Click “Setup Printer” to change the time slip message printed by the Eliminator Next Gen. “Send Default” will restore the default time slip message. “Send Message” will send a new, 2-line time slip message to the Eliminator. The lines can be up to 40 characters in length. If less than 40 characters are entered, the message will be centered in spaces before being sent to the Eliminator Next Gen.



**Setup Leaderboard:** Click “Setup Leaderboard” to setup how runs are displayed and ranked on the Leaderboard. The leaderboard setup screen cannot be opened once the leaderboard is active. As a result, it is good practice to check the leaderboard setup before starting the leaderboard.

**Rank by:** Select to rank racers by most wins, best reaction time, fastest MPH, or quickest elapsed time.

**Enable Run Review:** When enabled, *Track Leaderboard* will display runs to the track operator before adding them to the leaderboard.

**Leaderboard Columns:** Check the information that should be displayed on the leaderboard. The options are Name, Dial-In, RT, MPH, ET, and number of Wins.

Click “Save” to save the leaderboard setup. “Cancel” will revert back to the previous setup.

**Start Leaderboard:** Click “Start Leaderboard” to show the Leaderboard screen. The Leaderboard screen can be scaled (maximized/minimized) to fill any size screen. Portatree recommends running the computer that is maintaining the Leaderboard in a dual monitor configuration. The

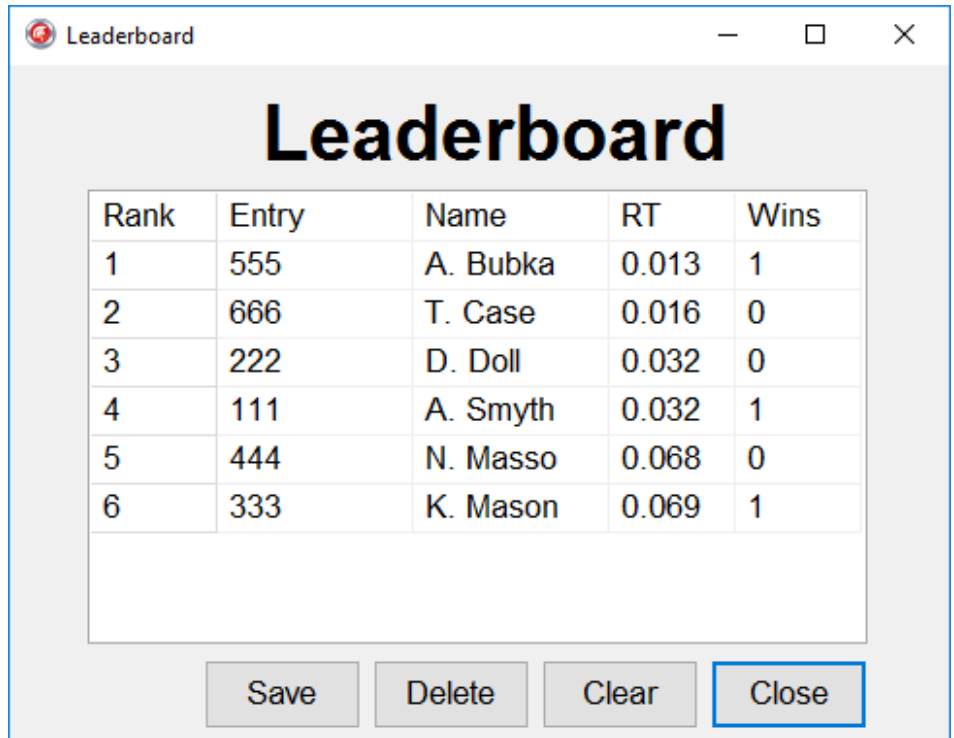
Leaderboard can be displayed on one monitor that is viewable by the public, and the Race Control screen can be kept on the main/private monitor.

**Save:** Click to save the leaderboard to a .txt or .csv file

**Delete:** Click a run displayed on the Leaderboard (row will highlight) and click “Delete” to delete the run. If a run is clicked mistakenly, simply click again to deselect. If the entry has made multiple runs, the deleted run may be replaced on the Leaderboard with a previous good run.

**Clear:** Clear all the Leaderboard data. Equivalent to starting a new Leaderboard.

**Close:** Close the Leaderboard screen. The Leaderboard screen can also be closed by clicking “Start Leaderboard” on the “Race Control” screen.



Rank	Entry	Name	RT	Wins
1	555	A. Bubka	0.013	1
2	666	T. Case	0.016	0
3	222	D. Doll	0.032	0
4	111	A. Smyth	0.032	1
5	444	N. Masso	0.068	0
6	333	K. Mason	0.069	1

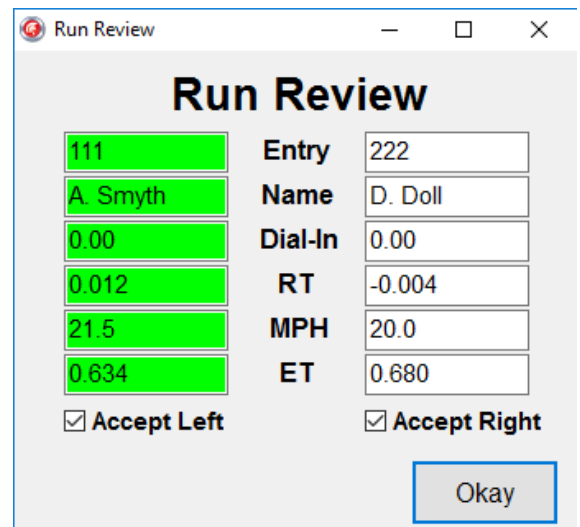
Buttons: Save, Delete, Clear, Close

**Car Number:** Enter user Car Numbers into each lane. The boxes will turn yellow when there is new data entered that has not been sent to the Eliminator Next Gen. To run a single user, type “BYE” as the Car Number in the unused lane. The Leaderboard will automatically disqualify this lane.

**Dial-In:** Enter user Dial-In into each lane (optional). The boxes will turn yellow when there is new data entered that has not been sent to the Eliminator Next Gen

**Send Data:** Click to send new Car Numbers and/or Dial-Ins to the Eliminator Next Gen. The boxes with sent information will turn green to indicate that the transfer was successful.

**Start Race:** Click to start the tree sequence on the Eliminator Next Gen. If stage beams are enabled and no user is staged OR if there is a fault on the track, the Eliminator will return an error and the race will not start. If the race starts successfully, no communication will be allowed with the Eliminator Next Gen until the finish signal is received. If “Run Review” is enabled, a review screen will display when the race is complete. You will have the option to accept each run, one run, or neither run. Once the selection is made, click “Okay.” If “Run Review” is not enabled, the new runs will automatically display in the Leaderboard.



Run Review

111	Entry	222
A. Smyth	Name	D. Doll
0.00	Dial-In	0.00
0.012	RT	-0.004
21.5	MPH	20.0
0.634	ET	0.680

Accept Left       Accept Right

Okay

If *Track Leaderboard* loses communication with the Eliminator Next Gen, simply reconnect to the Eliminator. *Track Leaderboard* will ask if you want to “use existing Leaderboard Data.” Click “Yes” to continue adding to the existing results.

## Tech Support

For further information and support contact Portatree Technical Department.

**Email:** [tech@portatree.com](mailto:tech@portatree.com)

**Phone:** 508-278-2189 ext. 8