



**594 Blackstone Street -- P.O. Box 206 -- Uxbridge, MA 01569**

**Tel 508-278-2199 Fax 508-278-5887**

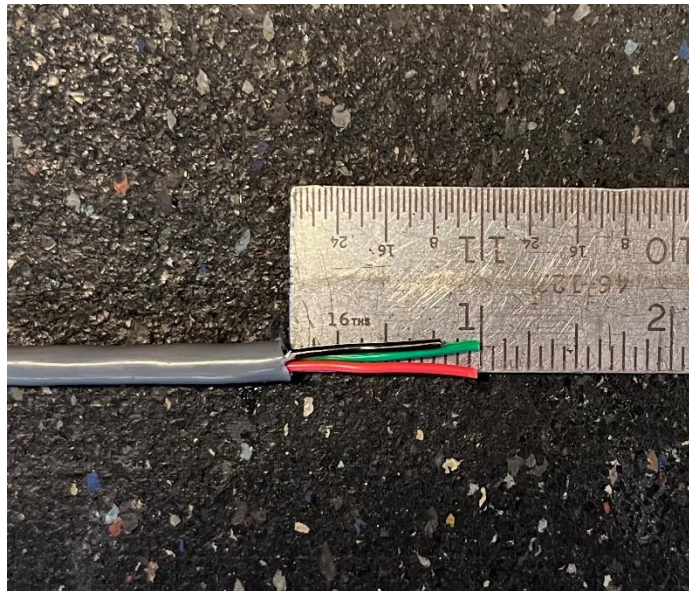
**Email: [tech@portatree.com](mailto:tech@portatree.com) Web Site: [WWW.PORTATREE.COM](http://WWW.PORTATREE.COM)**

# Portatree Unisex 3-Place Connector Kit

**One complete connector will consist of:**

- 1 - Top
- 1 - Bottom
- 4 - #4 x 3/8 Sheet Metal Screws

To install the connectors, first prepare the wire by stripping approximately 1 inch of the outside jacket off.



Spread the individual conductors into a fork, as pictured:



Next, the wires will need to be pushed into the contact clips. This can be done with the push in tool. Pushing the wires into the contacts can also be done with a small flat head screwdriver. It is best to push the wire in evenly and fully!



Next, screw the Top onto the Bottom using the supplied screws. Tighten until the top is fully seated on the bottom, there should be no gaps along the seams.



## TIPS:

- Never use dielectric grease on the contacts. Grease can hold in dirt and debris not allowing the connector contacts to make a good electrical contact. We recommend using WD-40. Simply spray the contacts down and then blow out any excess with compressed air. This will wash out any dirt and apply a protective coating to each contact.