

Track Leaderboard

Software Instructions

Installation Instructions

Track Leaderboard is compatible with Windows XP, 7, 8, 8.1, and 10. It is compatible with Eliminator Next Gen Test Track version 1.11PT and later.

- 1.) Insert the *Track Leaderboard* CD into your computer
- 2.) Open the CD drive
- 3.) Double click "setup.exe"
- 4.) Follow the prompts to install *Track Leaderboard* on your computer

Networking Instructions

Track Leaderboard can be installed on multiple computers and networked so that one computer is registering new users while another computer is running races and maintaining the leaderboard. To setup computers for networking, perform the following steps on each computer:

- 1.) Open "Control Panel"
- 2.) Click "Network and Sharing Center"
- 3.) Click "Change advanced sharing settings"
- 4.) For your current profile, perform the following:
 - a. Select "Turn on network discovery" and check "Turn on automatic setup of network connected devices"
 - b. Select "Turn on file and printer sharing"
 - c. Under public folder sharing select "Turn on sharing so anyone with network access can read and write files in the Public folders"
 - d. Under password protected sharing select "Turn off password protected sharing"

Note: In Windows 10, some of these settings may be under "All Networks"

Note: Portatree highly recommends that computers be on a **private** network when using the above settings. If on a public network, use the settings at your own risk.

General Setup

Before using the *Track Leaderboard* software, the "Registration" number and communication "Port" for the Eliminator must be entered. If you are only using the software for "Name Entry" only the "Registration" number is necessary.

The **Registration Number** for SN _____ is _____

Name Entry

The "Name Entry" button on the *Track Leaderboard* main screen will lead to the user registration panel. On the "Name Entry" screen you will find the following:

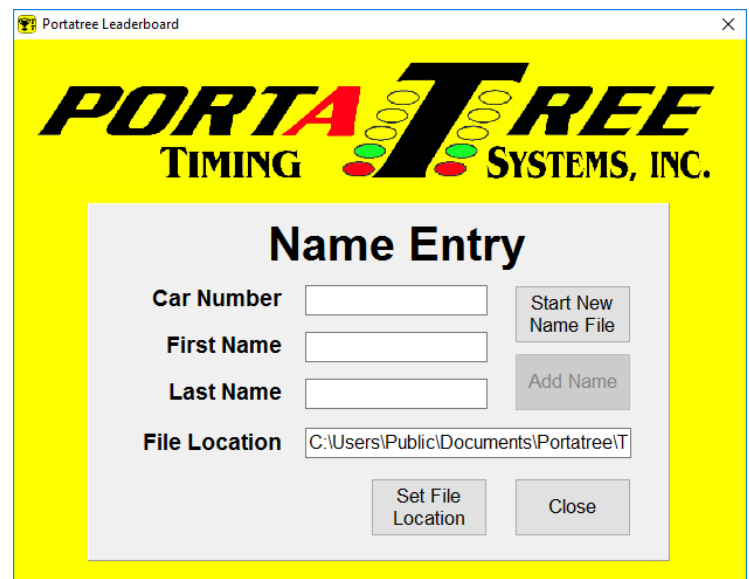
File Location: Location of the "Name File". Unless switching computers or networks, "File Location" should only need to be set the first time using the *Track Leaderboard* program. If "File Location" is set incorrectly, the leaderboard "Name" field will be blank. See instructions below for setting "File Location".

Start New Name File: Deletes current "Name File" and starts a new "Name File".

Car Number: Each user must have a unique 1 to 5 digit alphanumeric “Car Number”. “BYE” cannot be used as a car number. If the same “Car Number” is entered twice, you will be asked to replace the original. This can be used to edit an entry that was entered incorrectly.

First and Last Name: First and Last Name of user associated with the car number.

Add Name: Once a valid Car Number, First Name, and Last Name are entered, Add Name will activate and add the user to the “Name File.”



Setup File Location when using Track Leaderboard on a single computer:

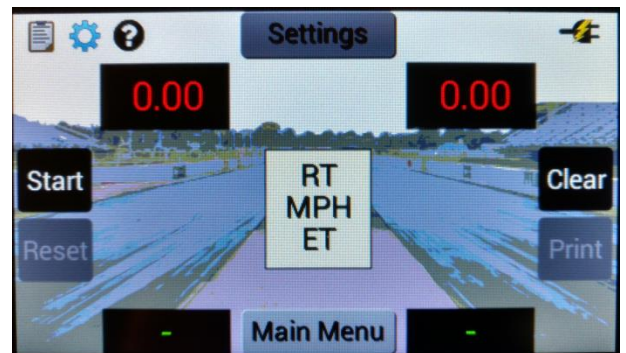
- File Location should be set to “C:\Users\Public\Documents\Portatree\TTLeaderboard”
- This is the default location, but if it is not set click “Set File Location” to navigate to this location
- Note: “Public Documents” is located under C >> Users >> Public >> Public Documents

Setup File Location when using Track Leaderboard on a network:

- File Location should be set to the “TTLeaderboard” folder on the computer running the races and maintaining the leaderboard
- Click “Set File Location”
- Click “Network”
- Select the computer that is running races/maintaining the leaderboard
- Navigate to Users >> Public >> Public Documents >> Portatree >> TTLeaderboard
- Click “Select Folder”

Connecting to Eliminator

- 1.) Connect the Eliminator Next Gen to a computer
 - a. The Eliminator Next Gen USB port is on the top left of the device
- 2.) Turn on the Eliminator Next Gen
- 3.) Open *Track Leaderboard* on your computer
- 4.) On the Eliminator Next Gen, navigate to the “Test Track” main race screen
- 5.) Click the “Connect” button in *Track Leaderboard*
 - a. The “Race Control” panel should appear in *Track Leaderboard* and the Eliminator Next Gen should display “Connected” under “Settings”
- 6.) If the program fails to connect to the Eliminator Next Gen, check the Port number entered
 - a. Open “Device Manager”
 - i. Windows XP: Open Control Panel >> System >> Hardware >> Device Manager
 - ii. Windows 7: Open Control Panel, select “View by Small Icons”, click Device Manager
 - iii. Windows 8 to 10: Right click the Windows icon, select Device Manager
 - b. Expand “Ports (COM & LPT)”
 - c. Find “Communication Device Class ASF Example” and write down the COM number
 - d. In *Track Leaderboard* enter the COM number into the “Port” box and Repeat Step 5



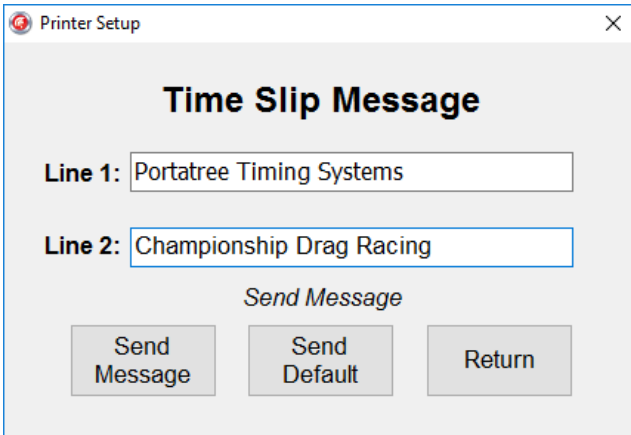
Step 4: Test Track Main Race Screen

Race Control

The “Race Control” screen handles all communication between the Eliminator Next Gen and the Leaderboard. Currently *Track Leaderboard* will only work when the Eliminator Next Gen is configured with Auto Start off.

Disconnect: Click to disconnect from the Eliminator Next Gen.

Setup Printer: Click “Setup Printer” to change the time slip message printed by the Eliminator Next Gen. “Send Default” will restore the Portatree factory default message. “Send Message” will send a new, 2-line message to the Eliminator. The lines can be up to 40 characters in length. If less than 40 characters are entered, the message will be centered in spaces before being sent to the Eliminator Next Gen.



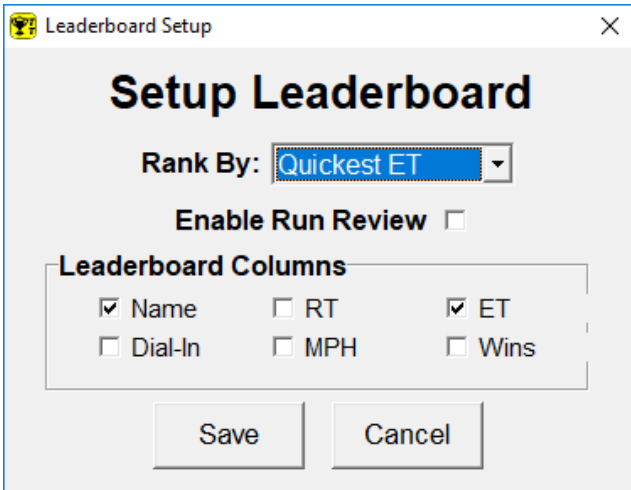
Printer Setup

Time Slip Message

Line 1:

Line 2:

Send Message



Leaderboard Setup

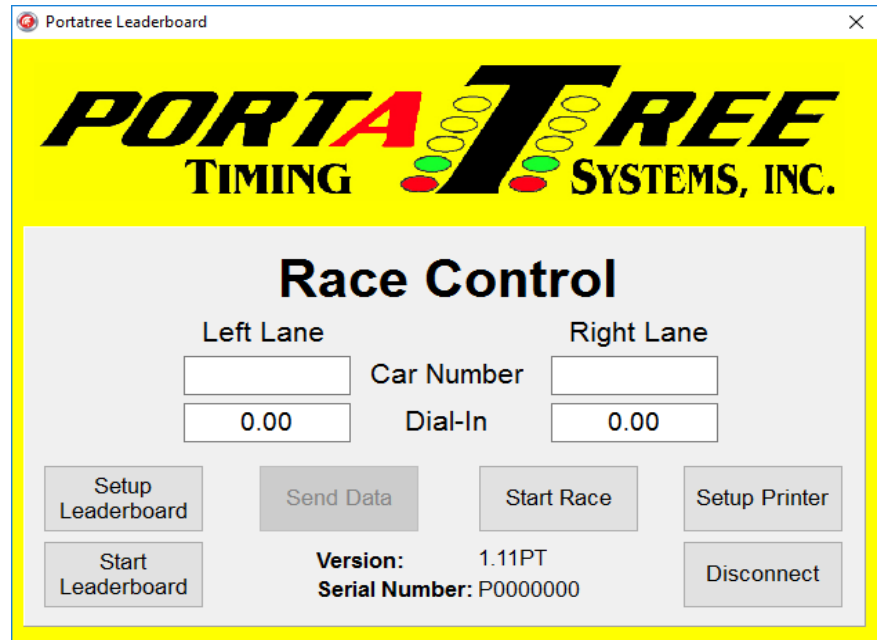
Setup Leaderboard

Rank By:

Enable Run Review

Leaderboard Columns

<input checked="" type="checkbox"/> Name	<input type="checkbox"/> RT	<input checked="" type="checkbox"/> ET
<input type="checkbox"/> Dial-In	<input type="checkbox"/> MPH	<input type="checkbox"/> Wins



Portatree Leaderboard

PORTATREE
TIMING SYSTEMS, INC.

Race Control

Left Lane	Car Number	Right Lane
<input type="text" value="0.00"/>	<input type="text"/>	<input type="text" value="0.00"/>
<input type="text" value="0.00"/>	Dial-In	<input type="text" value="0.00"/>

Version: 1.11PT
Serial Number: P0000000

Setup Leaderboard: Click “Setup Leaderboard” to setup how runs are displayed and ranked on the Leaderboard. The leaderboard setup screen cannot be opened once the leaderboard is active. As a result, it is good practice to check the leaderboard setup before starting the leaderboard.

Rank by: Select to rank racers by most wins, best reaction time, fastest MPH, or quickest elapsed time.

Enable Run Review: When enabled, *Track Leaderboard* will display runs to the track operator before adding them to the leaderboard.

Leaderboard Columns: Check the information that should be displayed on the leaderboard. The options are Name, Dial-In, RT, MPH, ET, and number of Wins.

Click “Save” to save the leaderboard setup. “Cancel” will revert back to the previous setup.

Start Leaderboard: Click “Start Leaderboard” to show the Leaderboard screen. The Leaderboard screen can be scaled (maximized/minimized) to fill any size screen. Portatree recommends running the computer that is maintaining the

Leaderboard in a dual monitor configuration. The Leaderboard can be displayed on one monitor that is viewable by the public, and the Race Control screen can be kept on the main/private monitor.

File: Options to save or close the leaderboard. Save will export the leaderboard data to a .txt or .csv file

Edit: Options to delete entries from the leaderboard or clear the entire leaderboard.

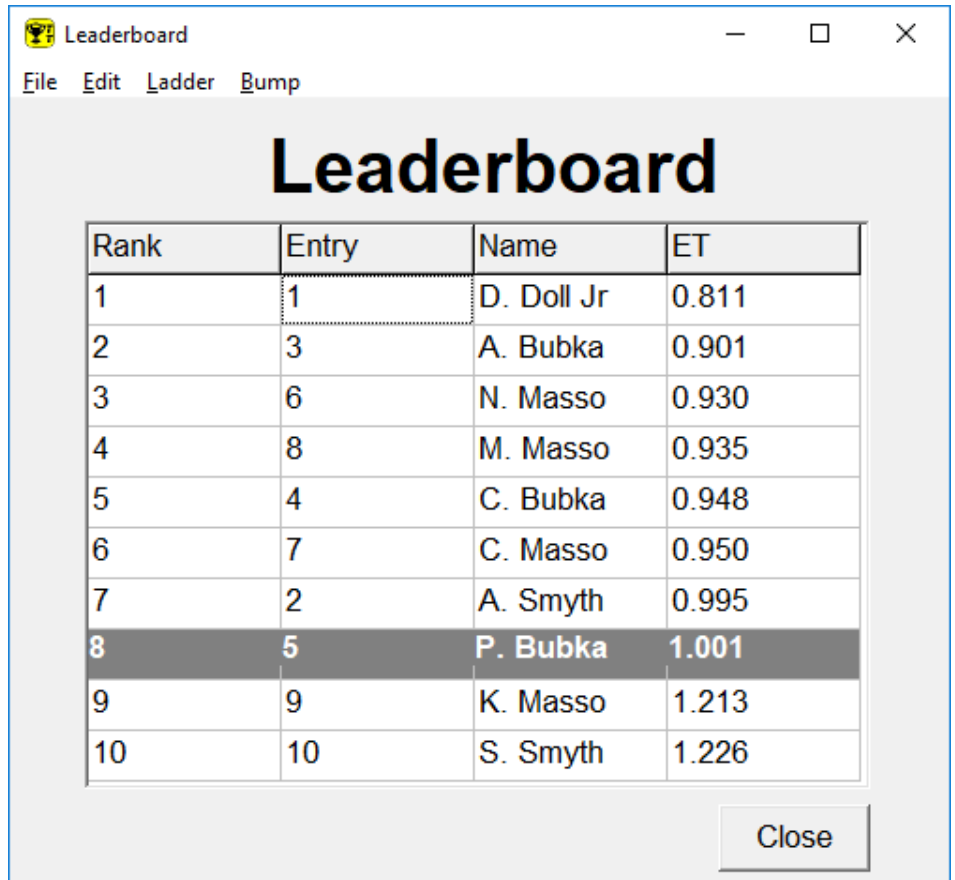
Delete: Click a run displayed on the Leaderboard (row will highlight) and click Edit >> Delete to delete the run. If a run is clicked mistakenly, simply click again to deselect. If the entry has made multiple runs, the deleted run may be replaced on the Leaderboard with a previous good run.

Clear: Clear all the Leaderboard data. Equivalent to starting a new Leaderboard.

Ladder: Only available for Dual Lane Test Tracks. Must have at least 4 leaderboard entries to start a ladder. Click to bring up the ladder setup screen (see below).

Bump: Click to add a bump spot to the leaderboard. Bump spot can be set to 4, 8, 16, or 32. The bump can also be cleared from this menu.

Close: Closes the Leaderboard screen. The Leaderboard screen can also be closed by clicking "Start Leaderboard" on the "Race Control" screen or File >> Close from the Leaderboard screen.



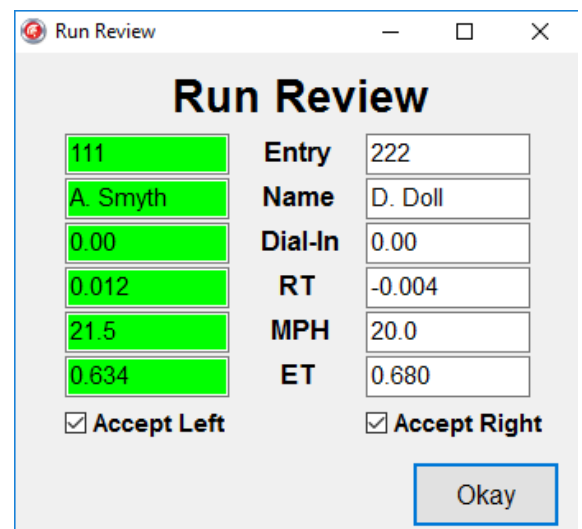
Car Number: Enter user Car Numbers into each lane. The boxes will turn yellow when there is new data entered that has not been sent to the Eliminator Next Gen. To run a single user, type "BYE" as the Car Number in the unused lane. The Leaderboard will automatically disqualify this lane.

Dial-In: Enter user Dial-In into each lane (optional). The boxes will turn yellow when there is new data entered that has not been sent to the Eliminator Next Gen

Send Data: Click to send new Car Numbers and/or Dial-Ins to the Eliminator Next Gen. The boxes with sent information will turn green to indicate that the transfer was successful.

Start Race: Click to start the tree sequence on the Eliminator Next Gen. If stage beams are enabled and no user is staged OR if there is a fault on the track, the Eliminator will return an error and the race will not start. If the race starts successfully, no communication will be allowed with the Eliminator Next Gen until the finish signal is received. If "Run Review" is enabled, a review screen will display when the race is complete. You will have the option to accept each run, one run, or neither run. Once the selection is made, click "Okay." If "Run Review" is not enabled, the new runs will automatically display in the Leaderboard.

If *Track Leaderboard* loses communication with the Eliminator



Next Gen, simply reconnect to the Eliminator. *Track Leaderboard* will ask if you want to “use existing Leaderboard Data.” Click “Yes” to continue adding to the existing results.

Ladder Setup: Enter by clicking “Ladder” on the Leaderboard Screen. Ladder setup requests information to allow the software to create a ladder from the leaderboard data.

Positions: Select a 4, 8, 16, or 32 position ladder. The number of positions must be less than or equal to the number of entries in the leaderboard.

Ladder Type: Pro and Sportsman ladders available

OK: Click to generate a ladder with the settings specified (see Ladder Screen)

Cancel: Return to the Leaderboard screen without generating a ladder

Ladder Screen: Displays a ladder based on the inputs from the Ladder Setup screen. Like the Leaderboard screen, the Ladder screen can be scaled (maximized/minimized) to fit any size display. As races are run, the Ladder screen will automatically update with the winner from each pairing until a final winner is found. If a pairing is run that is not listed on the ladder, the software will discard the results. Pairs that are run after a winner is declared are also discarded.

When operating with “Run Review” enabled, the software allows you to discard results before the Ladder Screen is updated. The Ladder Screen cannot be modified. All results are final once added to the Ladder Screen.

If a racer is not able to make the “call” for an elimination round, the pair can be run as a “BYE” run for the vehicle able to make it to the lanes.

Enter “BYE” as the car number in the unused lane and start the race per usual. In a system with stage beams, make sure that the unused lane is not staged at the start of the race.

Tech Support

For further information and support contact Portatree Technical Department.

Email: tech@portatree.com

Phone: 508-278-2199 ext. 8

