

Competition Connect

Software Instructions

Note: You will need a Type A to Type B USB cable to connect to the Eliminator Competition
We recommend www.monoprice.com Item #5436 or Item #5437

Installation Instructions:

Competition Connect is compatible with Windows XP, 7, 8, 8.1, and 10

- 1.) Download *Competition Connect* from www.portatree.com
 - a. Navigate to the Eliminator Competition product page
http://www.portatree.com/Category/track_eliminator
 - b. Scroll down to the “Instructions” area
 - c. Download “CompetitionConnect.zip”
- 2.) Open the folder where you downloaded “CompetitionConnect.zip”
- 3.) Right click “CompetitionConnect.zip” and select “Extract All”
 - a. Follow the prompts to unzip/extract the contents of the file
- 4.) Open the folder “CompetitionConnect”
- 5.) Double click “setup.exe”
- 6.) Follow the prompts to install *Competition Connect* on your computer

Connection Instructions

- 1.) Using a Type A to Type B USB cable, connect the Eliminator Competition to your computer
 - a. The Eliminator Competition USB port is on the top left of the device
- 2.) Turn on the Eliminator Competition
- 3.) Open *Competition Connect* on your computer
- 4.) Click the “Connect” button in *Competition Connect*
- 5.) The box in the top left of the program should turn green and show “Connected”
- 6.) If the program fails to connect to the Eliminator Competition, check the communication port
 - a. Open “Device Manager”
 - i. Windows XP: Open Control Panel >> System >> Hardware >> Device Manager
 - ii. Windows 7: Open Control Panel, select “View by Small Icons”, click Device Manager
 - iii. Windows 8 to 10: Right click the Windows icon, select Device Manager
 - b. Expand “Ports (COM & LPT)”
 - c. Find “Communication Device Class ASF Example” and write down the COM number
 - i. If the Eliminator Competition is not listed, go to Step g
 - d. Click the “Setup” button in the *Competition Connect* software
 - e. Type the COM number from Step C into the “Connection Port” box and click “Save”
 - f. Repeat Step 4
 - g. If the Eliminator Competition is not found under “Ports (COM & LPT)” then it may be in “Other Devices”. This is common when the device drivers do not install properly
 - i. Right-click the Eliminator Competition and select “Update Driver”
 - ii. Select “Browse my computer for driver software”
 - iii. The driver is located in “C:\Program Files (x86)\Portatree\CompetitionConnect”
 - iv. Follow the remaining steps to install the device drivers
 - v. Repeat Step 4

Software Instructions

After connecting to the Eliminator Competition, *Competition Connect* will update with the Version and Serial Number of the Eliminator. The Track Layout, Track Settings, and Time Slip Message will also load from the Eliminator. The Track Layout panel denotes active sensors as black boxes and inactive sensors as gray boxes.

Race Data Section:

Section to view and manage all race data files downloaded from the Eliminator Competition.

Download: Click to download all Race Files from the Eliminator Competition. Downloaded files will be displayed in the file box once received.

Delete: When connected to the Eliminator Competition, click *Delete* to delete all Race Files from the Eliminator. The files cannot be recovered once deleted!

When disconnected from the Eliminator Competition, click “Delete” to delete a single file from the computer. The file will be permanently deleted and will no longer appear in the file list.

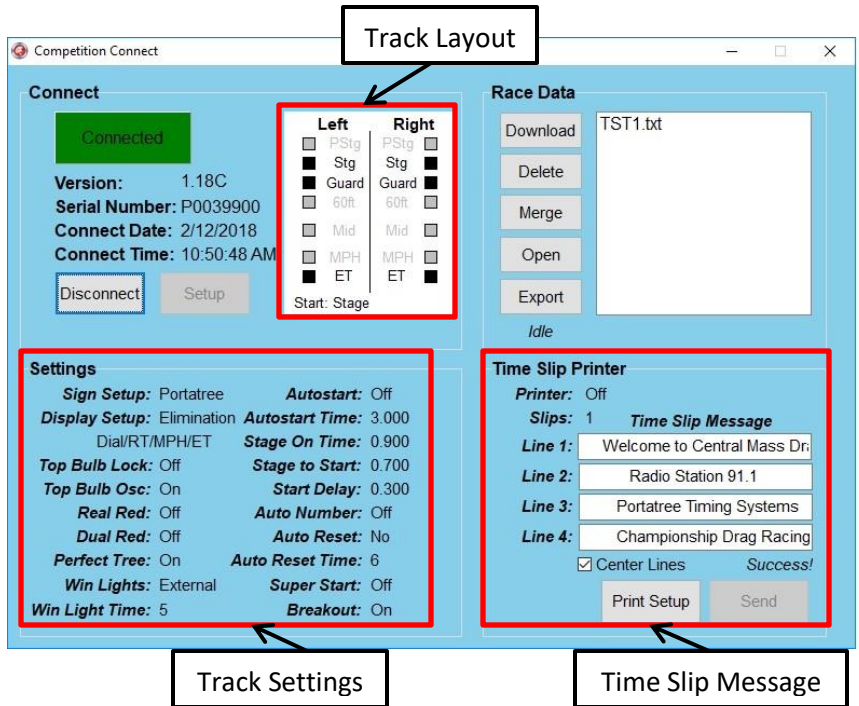
Merge: Click to merge multiple Race Files to a single file. The files selected for a merge must all have been generated on an Eliminator Competition with the same track layout (i.e. same active sensors). Perform the following steps to complete a file merge.

1. Click “Merge” to begin
2. Press the “Ctrl” key and click each file to include in the Merge*
3. Click “Merge” again to start merging the files
 - a. Enter a name for the new merged file and click “Save”
 - i. If the file already exists, you will be asked if you want to replace it
 - b. If the files were generated by Eliminator Competitions with different layouts the merge will fail due to “File Mismatch”

* Note: Each file selected for the merge will be deleted once the merge successfully completes

Open: Select a file from the race file list and click “Open” to view the file. The race file will open in a separate file viewing page.

- Data is displayed Left Lane followed by Right Lane
- The font color for the winning lane is green. If win lights were not enabled, a winning lane will not be identified
- When win lights are enabled, the margin of victory (MOV) is displayed in the winning lane; otherwise, it is displayed in the lane of the vehicle that crossed the finish line first
- Negative MOV indicates that the winning lane crossed the finish line second



Viewing: TST1.txt

Run	Entry	Dial	RT	60ft	Mid	MPH	ET	Ov/Un	MOV
1	-	5.00	0.0395	3.0080	3.2984	54.9	4.4339	-0.5661	
	-	3.00	0.0417	1.0332	1.2886	53.1	2.4455	-0.5545	-0.0138
2	-	5.00	0.0326	3.0118	3.4064	18.1	6.5883	1.5883	
	-	3.00	0.0089	1.0869	1.5184	27.6	3.7508	0.7508	0.8612
3	-	5.00	0.0696	3.2277	3.5612	32.2	5.4262	0.4262	0.0259
	-	3.00	-0.0223	1.3608	1.6596	31.8	3.5440	0.5440	
4	-	0.00	0.1002	0.0000	0.0000	0.00	64.9999	-	
	-	0.00	0.5527	0.0000	0.0000	0.00	64.9999	-	
5	-	5.00	-0.0109	0.0000	0.0000	0.00	64.9999	-	
	-	3.00	DQ	0.0000	0.0000	0.00	0.0000	-	
6	-	5.00	0.0211	0.0000	0.0000	0.00	3.7952	-1.2048	0.0102
	-	3.00	0.0677	0.0000	1.7567	49.1	1.7588	-1.2412	

- DQ (disqualify) indicates a BYE run
- NT (no time) indicates a vehicle did not break the starting line beams
- Blank fields indicate that a sensor was not active when the data was recorded

Click “Close” to exit the viewing page.

Export: Select a file and click “Export” to convert the Race File to a comma separated values (.csv) file that can be opened in Excel.

Time Slip Printer Section:

Section to view the time slip printer settings and view/edit the time slip printer message.

Print Setup: Click to receive all time slip printer settings from the Eliminator Competition. This includes whether the printer is enabled/disabled, the number of time slips that print for each run, and the message that appears on the top of the time slip.

Time Slip Message: Upon connecting to the Eliminator Competition, the Time Slip Message boxes update with the current time slip message that is in the unit. Each Time Slip Message box is editable and accepts up to 40 characters. By clicking the “Center Lines” checkbox under the Time Slip Message boxes, all time slip message lines will be centered with spaces.

Send: When a new time slip message is entered or the existing time slip message is edited, the “Send” button is enabled. When clicked, *Competition Connect* will send the new time slip message to the Eliminator Competition. It will show “Success” when the new message is accepted by the Eliminator Competition.