

# PORTATREE PROFESSIONAL

## "ULTIMATE" TRACK SYSTEMS

- ▣ 1/4 & 1/8 Mile Asphalt Track
- ▣ Dirt / Sand Track
- ▣ Mud Track
- ▣ Snowmobile Track
- ▣ R/C Car Track
- ▣ Custom Track Systems
- ▣ Windows<sup>™</sup> Software

[www.portatree.com](http://www.portatree.com)

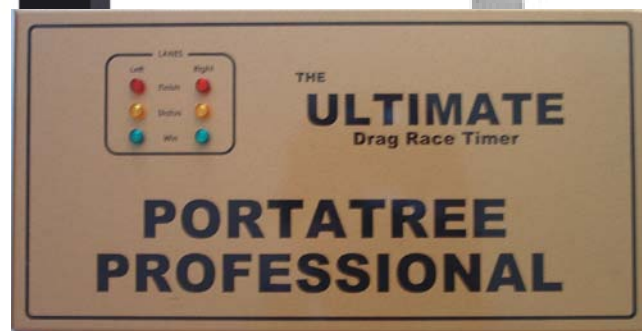
NHRA Style  
LED Bulbs



Emitter / Receiver Sensors  
Infrared Sensors  
Laser Sensors  
For Asphalt, Sand,  
Snowmobile, Mud, For  
All track applications



Time Slip Printer



( Actual Size 12.5" x 6.5" x 2" )

**Order# 1-800-541-7613 Ext: 503**

**Tech# 508-278-2199 Fax# 508-278-5887**

**EMAIL : [info@portatree.com](mailto:info@portatree.com)**

**PORTA TREE**  
TIMING SYSTEMS

594 Blackstone Street  
PO Box 206  
Uxbridge, MA 01569

# Portatree Professional - The Ultimate Drag Race Timer

## What are you looking for in your Drag Track Timing System?

### Affordability - Accuracy - Dependability

- Do you suffer from equipment failure that causes emergencies? Emergencies can happen to any electronic device no matter how well protected. Portatree's main track timer was designed so that it can be changed in less than 1 minute.
- Our Track Timer links directly to your own PCs (Portatree does not supply PCs). Our software is all Windows<sup>tm</sup> based. This allows you to set up your control tower the way you want by networking your own PCs through Windows<sup>tm</sup> software.

Example:

- 1 P. C. for the Drag Race Operator
- 1 P. C. for the Administrator (Race Director)
- 1 P. C. for the Announcer - Also controls the Time Slip Printer
- 1 P. C. for the Office

Up to 10 or more P. C.'s can be connected to the network and P. C. distance apart is limited to your network cabling. We do not recommend wireless due to security issues.

- Racer Entry and Category Setup should be on the Administrator P.C.
- Track Diagnostics on every sensor (a light illuminates on the Portatree Professional Ultimate Timer to warn you). If a finish line sensor is out, a warning light will illuminate and you can't start a race (Eliminates reruns due to faulty E.T.).
- Accuracy: Our Pro-Ultimate timer (gold box) is calibrated to be within .0001 seconds at 20 seconds. It displays information to .00001 and is repeatable to .000001 seconds!
- When purchasing equipment for your track, determine first what you need to satisfy your racers, your spectators, and your budget. Whether your track is large or small, Portatree allows you to tailor a system to meet your requirements and allows you to add on and upgrade as your Drag Strip grows.
- The Eliminator Super 2000 Economy competition track system can also be supplied as an emergency backup as it runs with or without a P.C. If your P.C. fails, you can still run your race with Dial-Ins, Breakouts, and Time Slips!!
- Our systems are designed for any size track (SMALL - under 100 race vehicles, MEDIUM - under 250 race vehicles, and LARGE - consistently over 250 race vehicles per event). The level of operation can range from a single P.C. with a database that only runs the races to a networked system of multiple P.C.s with a separate P.C. for data entry, tech station, announcer station, and race operation. If you really want the vehicles to move through your staging lanes, the Portatree Professional Ultimate system is a must.
- Points Programs, Mailing Lists, Data Log Print out, and Category Editor are all part of the post process program and are sent along with help files when any of the P.C. software programs are purchased. We also offer NHRA/IHRA Auto Start feature, an Instant Qualifier, and a separate Announcer Program. Some other features are: Top Bulb Lock (Cross Talk), Package Racing, and the ability to print Weather, using P.C. Weather Center Deluxe, on the time slips.

# PORTATREE PROFESSIONAL "ULTIMATE" TRACK TIMING SYSTEM

## Utilizes Windows™ Based Software A GENERATION AHEAD OF THE COMPETITION THE HIGHEST PERFORMANCE DRAG RACE TIMING SYSTEM

Our line of drag racing timing computers has revolutionized the sport of drag racing and allows a track to begin very small and to grow very large. The features that are standard on all of our units are state of the art and some of the options that we offer are very futuristic. We have options that offer increased efficiency and others that offer increased safety. Whatever your track size, the Portatree Professional is flexible enough to fit your needs.

### BASE UNIT

The Portatree Professional is designed to operate with an Windows™ compatible Personal Computer (P.C.). Portatree does not supply the P.C.s. P.C. technology changes so fast that it is best that you purchase your P.C.'s locally so that you can keep your P.C.'s current. When computer speed gets faster, you can simply bring your P.C. to your local computer store and have it upgraded to the latest and greatest technology. If you want to operate up to 10 or more P.C.'s on a LAN, you can easily setup your own custom application.

### SPECIAL FEATURES

We currently serve over 1,000 Tracks Worldwide and the amount of feedback and response from track owners and managers has prompted us to add some of the most unique features that anyone could imagine:

- **TOP BULB OSCILLATE (FULL TREE):** This feature allows the track operator to set the computer into a mode that makes the top amber on the Christmas Tree never come on at the correct time. The second and third bulbs operate as they normally would, but any driver with a delay box trying to leave off of the top bulb will never be able to cut a consistent reaction time. This helps the track operator by eliminating the need to police cars for delay boxes in classes where no delay boxes are allowed. This is also a good deterrent to people trying to cheat.
- **TREE SPEED SET:** The normal .500 and .400 Tree Speeds in Full and Pro tree are preset in the computer. If a track operator wanted to initiate a special tree speed, it can be done in the setup menu. Any custom speed between .100 and .900 seconds can be entered into the computer. Tree speeds can be set to .001 seconds.
- **FULL AND PRO TREE RACES IN SAME CLASS:** This feature allows the track operator to run Full trees against Pro trees with any tree speed setting. You can run an all out anything goes category with handicaps and true win. This is a great promotional feature that will attract many new racers and fans to your track.
- **PERFECT TREE .000 OR .400/.500 (TREE SPEED):** The software is setup to report Reaction Time as .000 Perfect Light or Tree Speed as the Perfect Light
- **TIMESLIP PRINTER PROGRAM:** Portatree provides a separate program that generates time slips for the racers. We recommend that it is run on a separate P.C. (other than the Drag Race Operator's computer), usually the Announcer's P.C. The program prints a time slip when results are added to the results database. You can print any slip at any time and it supports a printer in the Tower as well as Down Track.
- **NETWORKING P.C.'S WITH PORTATREE CUSTOM SOFTWARE:** The number of Personal Computers that you connect to your LAN (Local Area Network) is your choice. This feature gives you incredible power and operational functions at your race track. You can have one P.C. in the tower for race control, a second P.C. for the announcer, a third P.C. for printing out

Qualifying and Ladder reports as well as Pairing Lists, and a fourth P.C. in the Tech Station, a fifth in the Office, etc.....

- **MICROSOFT WINDOWS™ COMPATIBLE SOFTWARE:** The Portatree Software is Windows™ compatible. The Portatree System is the only system on the market that lets the customers use their own P.C. to connect to the system. This allows the customer to upgrade their computers at any time as technology improves.
- **PACKAGE RACING, BRACKET RACING (BREAKOUTS), OR FIRST FINISH:** Every Promoter knows about Bracket Racing or first finish, but Package Racing is a whole new concept that is safer and more fun for spectators. Instead of having a red light foul or a breakout spoil the racing action, we allow a racer to go .100 under a perfect light (.101 under will red light) and still go green! We add the absolute value of their RT (over or under) to the absolute value of their ET (over or under their Dial-In) and see which racer has the better package (you CAN NOT Breakout).

EXAMPLE (Using .000 as a perfect light):

Racer 1: .017 RT – 9.529 ET on a 9.52 Dial

Racer 1 Package: .017 + .009 = .026

Racer 2: -.011 RT – 9.106 ET on a 9.12 Dial

Racer 2 Package: .011 + .014 = .025 (Winner)

- **DIAGNOSTICS:** A new diagnostics screen is provided that helps analyze all inputs and outputs of the Portatree Professional Ultimate. This is helpful in troubleshooting photocell inputs. You can tie inputs to Tree Lights so that one person can trouble shoot sensor connection & alignment.
- **STATUS LIGHTS:** On the face of the Ultimate Pro Box are finish line/guard status, down track sensor status, and win status. If any down track sensor is misaligned, the Down track status light will illuminate for that lane (yellow L.E.D.). If the Finish line or guard beam sensor is misaligned the finish line status light in that lane will illuminate (red L.E.D.). If a yellow L.E.D. is illuminated you can still run a race. If a red L.E.D. is illuminated, you will not be able to run a race. The Win light illuminates after a race is complete (green L.E.D.).
- **DIAL-IN DISPLAY BOARD (OPTIONAL):** The racer will know exactly what their Dial-Ins are when they pull up to the starting line. The system supports 2 Dial-In Boards - One in the Burnout area and One on top of the Tree. They are setup with two unique network addresses and work off the same data cable.
- **TOP BULB LOCK:** Also known as “**Cross-Talk**”. When this feature is turned on the top amber bulb in each lane comes on at the same time on a handicapped tree. The second and third amber will operate as they normally would.
- **ELIMINATOR 2000 BACKUP TRACK TIMER:** Portatree’s Eliminator 2000 Economy Drag Track System can be used as an emergency stand alone backup system. It supports Pre-stage, Stage, Guard, 60’, mid-track ET, Finish MPH, Finish E.T., Win-lights and Stop-lights. Time-slips will show all results including Breakouts and Car Numbers. Dial-in displays (if setup) also supported.

# **HARDWARE SPECIFICATIONS**

- 12 Volt DC power input jack (do not connect, for testing only)
- Outputs:
  - 25-pin connector to full-size tree
  - Drivers for 2 win lights, 2 stop lights & tower ready
  - 1 RJ-12 output for time slip printer
  - 9-pin DSub or USB connector to connect to PC
- Inputs:
  - Pre-stage, stage, guard, 60ft, 330ft, Mid MPH, 660ft, 1000ft, finish MPH, and 1320ft sensors for each lane
  - Panic lights, reset and starter switches
  - Vehicle reaction time sensors (print roll out on every time slip!)
  - 8 additional sensors in each lane
- Adjustable tree speed from 0.100 to 0.900 for both Pro and Full Tree Type
- Computer connection required for Portatree Ultimate (Gold box) to operate
- "Eliminator 2000 Competition" can be used as a backup
  - Connects directly to the track interface box
  - Can be used standalone or with a PC
- The Portatree Ultimate (Gold box) is compatible with Portatree Professional (Silver Box) Systems or with Eliminator 2000 Competition Systems
  - Make sure your Portatree Ultimate is configured correctly before connecting it to your Portatree Professional or Eliminator 2000 Competition System!
- The Portatree Ultimate times to **.00001 seconds**
  - Accurate within .0001 seconds in 20 seconds of real time
  - Repeatable to .00001 seconds

**PORTATREE PROFESSIONAL ULTIMATE  
ENHANCED WINDOWS<sup>tm</sup> SOFTWARE - VER. 351  
Drag Race Software for the New Millennium**

Portatree has enhanced its Windows<sup>tm</sup>-based software package so that our customers can run a drag race quickly and comfortably with the ultimate in flexibility. Our software allows you to run your own personal computers. Our software can operate on multiple PCs over a LAN or stand-alone utilizing only one PC. The software can be customized on each PC allowing for a Drag Race Operator, Administrator, Announcer, Tech Area, Backup/Other, etc. The advantage of using your own PC is that you can utilize local support for faster service and purchase new PCs at bargain prices when you want to upgrade to the current level of technology. Drag strip operators that purchased computers just a few years ago from other timing system manufacturers are struggling with slow computers that they cannot upgrade without spending a lot of money! By linking our Portatree Professional computer to your personal computer, it allows you to use your local PC supplier to upgrade and maintain your PC at a fraction of the cost.

If you truly want high performance out of your Drag Race Timing System then you should definitely network at least two computers together so that one can be used by the race director (Administrator) while the other is used to run the drag racing event. Networking several PCs together will make your event run quickly and efficiently and local support cannot be beat!

**The Post Process and Drag Race Software** have been developed utilizing Borland International's Delphi for Windows<sup>tm</sup> Applications. We are very pleased with the performance of this software and recommend it to all tracks that have over 100 entries on any given race day.

**The Main Screen** is where all of the programs are launched including System Paths, Racer Entry, Category Editor, Points Tracking, Datalog, Mailing Lists, Announcer Program, Index Editor, Qualifying Ladders, and the Drag Race Program. There is even a separate program that runs the Time Slip Printer on a separate PC so there's no worry about the printer causing major down time. Keep running your races until the printer is up and running. The printer can start at any time slip, reprint slips and even be set up so that one printer is down track while a backup printer is sitting idle in the tower (this one can be used for reprints).

**Weather Information** is an optional software upgrade to the drag race package. The Portatree P.C. Weather Center offers very accurate readings on Temperature, Pressure, Humidity, Corrected Altitude (Motorsports Calculation), Vapor Pressure, Grains of Water, Wind Speed, and Wind Direction. All Weather information is printed on the time Slip and saved in the Results Database in case a record is challenged.

**Auto Start** has 4 parameters that can be set for each category in the Category Editor. Stage on Time (this accounts for flickering of the stage beam), Stage to Start, Random Delay Maximum, and Max Auto Start Delay, which can all be set in milliseconds. Auto Start can be set On or Off for each Category.

We continually update and add new features that will help you run your track more efficiently. There is no doubt that we are in an information age that requires a lot of processing power. The software that we provide will continually be improved for performance and power.



## DESCRIPTION OF SOFTWARE FUNCTIONS

### Post Process Software Description

#### Racer Database

- **99 Different Categories:** The racer database program supports up to 99 different categories.
- **Entry Number:** An Entry Number must be unique to a category. The same Entry Number can be in Multiple Categories.
- **Awarded Entry Numbers:** You can assign "Awarded" Entry Numbers to a racer while keeping track and maintaining their Original Entry Number (racer number).
  - **Example:** Entry Number 1783 is awarded Number 1 to display on the car for 1 year. The original Entry Number 1783 (racer number) is stored in the racer number location. All data is supported by the new Entry Number 1.
- **Managing Racer Data.** Helpful features include:
  - **Keeps track** of the Number of Entries in each Category.
  - Has a **List Box feature** for quick and easy viewing of all entry numbers currently in a category.
  - **Copy an Entire Category** and associated information to another Category. Displays conflicts (duplicate entry numbers) and allows the Operator to make changes.
  - **Copy 1 Entry** (Single Racer) and associated information to another category.
  - **Delete Functions:** Deletes all records in a Category or Delete a specific record.
  - **Print out** a Racer(s) information or all Entries in a Category.
- **76 Different Data Fields:** Racer Database has 76 different data fields for each racer. Includes: Full Name, Address, Phone Numbers, Accomplishments, Sponsors, Car and Engine information, Class Index information, etc.
- **Racer Registration:** Keeps track of a Racers Registration status and Year to Date points.
- **Flexible Search Feature:** Allows all fields to be searched by a "Partial Match" in an individual category or in all categories.
- **Quick Lookup of Records:** Keeps track of the Number of Entries in each Category. The Drop Down Lookup Feature allows quick lookup of records to confirm Entry Numbers that are currently in use at your track.
- **Quick Add Function:** The Quick Add Function allows for rapid data entry when only critical information needs to be entered. Useful when dealing with many tech cards with very little time before racing begins.
- **Dropdown Box for updating Index:** When running individual classes in a category, the current indexes can be located in a drop down list that will automatically add the index to the racer's record.
- **Prints:** Individual Racer Information or all Records in the Category. Marks Racer Records Registered (reg) in Points.
- **Drop Down lookup Feature:** Keeps track of the Number of Entries in each Category. This allows a quick lookup of records and is useful to check for existing Entry Numbers that are currently in use at your Track.

#### Mail

- **Scans Racer Database** for legal addresses.
- **Ability to Separate** by Category or Display all.
- **Print mailing labels** on standard 30 label sheet.
- **Displays** number of racers in the sort.
- **Takes valid E-mail addresses** and loads them into the Windows Address Book.

## Category Database

- **99 Different Categories:** The category database supports up to 99 separate categories all with editable names.
- **Allows Category Name Change**
- **Automatically sets up the Race Parameters:** The Category Database automatically sets up the race parameters in the drag race program for each category you are running.
- **Select Index:**
  - No Index
  - Default Dial
  - Class Index
  - Category Index
- **Qualifying Modes**
  - Reaction Time in Qualifying or after a round of Eliminations
  - Dial-in in Qualifying or after a round of Eliminations
  - Fastest ET in Qualifying or after a round of Eliminations
  - Fastest Under Index in Qualifying or after a round of Eliminations
  - Qualifying by Best Package
- **Set Category Default:**
  - Tree Type and Tree Speed
  - Finish Location: 1320 Foot - 660 Foot - 330 Foot - 60 Foot - or set your value in the Drag Race Program.
  - Type of Finish (First Finish, Breakout, or Package Racing)
  - Deep Stage Allowed or Not Allowed
  - Dual Red On/Off
  - Top Amber Bulb: (Normal, Oscillate, or Top Lock (NHRA Cross Talk))
  - Type Ladder (Sportsman or Pro)
  - Type Eliminator (Normal, Double Eliminations, or Chicago Shootout)
- **Entry Fee Field:** Allows automatic entry fee for payout calculator.
- **Report Feature** allows you to quickly print and review all category settings.
- **Auto Start Option - Settings**
  - Variable Delay (.100 to .900 seconds)
  - Stage On Time (.500 to 3.000 seconds)
  - Stage to Start (.200 to 3.000 seconds)
  - Max Delay (7 - 20 seconds)

## Data Log

**Displays Results** for all runs for a Specific Race Event. Displays all timing results from First Race to Last Race for a given race day. Many features for sorting and filtering the information displayed. Not for use in Qualifying.

- **Easy Numbering System** - Odd Race number - Left Lane / Even Race number - Right Lane
- **Display -**
  - Entry Number
  - Win/Loss
  - Disqualify Status
  - Category Number
  - Type Run (Time Trial - Qualifying - Elimination)
  - Round Number - Dial-In - Reaction Time - 60 Foot - Spped - Final ET
  - Date & Time of Run
- **Search Results by Category:** Type of Run - Round - Winner's Only or any Combination.



- **Displays Number of Entries Found in each Search** -- Keeps track of Car Count per Event and/or Per Category.
- **Search for Individual Entry Number** and allows you to display their Race competitor.
- **Double Click on Entry Number to bring up Time Slip** - Display results in .001 seconds or .00001 seconds.
- **Raw Data Report** - shows all intermediate times and includes 330 foot, mid Speed, 660 foot and 1,000 foot.
- **Interval Report** - displays all intermediate data by Category and highlights the Best Reaction Time, 60 foot, 330 foot, 660 foot, Mid Speed, 1000 foot, 1320 foot, and Final Speed on the printed out reports for each Category.
- **Flexible Sort Feature** - Sort by Reaction time, Elapsed Time (ET), Speed, Closest to Dial-In, Index, Package, and 1320X.
- **Refresh Data Button** - For use when new Data is sent from the Drag Race Computer if the program is open.

### Media Reports

- **Scans Results** and finds qualifying lists and elimination results.
- **Perform round by round Reports** -- Categories can be printed independently.
- **Perform a complete Win / Runner-Up / Semi Finalist** report for each category.
- **Outputs per Category** can be Previewed, Printed, made into an HTML or pdf File.
- **Provide a comma delimited Text File** of all elimination results found for each category.
- **All HTML and PDF files** are stored in a separate Web Folder that is selected on the Main Post Process Screen under Paths.

### Qualifying Program

The Qualifying Program uses the settings from the Category Database and the Data from the Results Database to generate a Qualifying list for a specific Category.

- **9 different Qualifying Modes** - set in the Category editor
  - Qualify by Fastest ET
  - Qualify by Best Reaction Time
  - Qualify closest to Dial-In
  - Qualify by Farthest Under Index
  - Qualify by Best Package
  - Qualify by Elimination Run by Fastest ET
  - Qualify by Elimination Run by Best Reaction Time
  - Qualify by Elimination Run Closest to Dial-In
  - Qualify by Elimination Run Farthest under Index
- **Supports up to 99 different categories**
- **Separate Qualifying Results in 1 Category into 3 New Categories** with Qualifying Lists in each Category based on the Number of entries that you select for each Category. **Example:** Top 8 could go into first new Category, next 16 into second new Category, remaining entries into third new Category.
- **Check BYE Run status** at any time to let you know who has already received BYE runs in previous Elimination Rounds. This is important if running a ladder after a round of Eliminations.
- **Manual editing of the Qualifying List** is easily done and can be saved. Manual edits are performed after the last qualifying session if required.
- **Racer Names** can be updated on the Qualifying List at any time.
- **Displays number of Entries** - Bump Spot -- Qualifying list showing results.

## Ladders

- **3 to 64 entry Pro or 3 to 128 entry Sportsman** Ladder selectable in the category editor.
- **Ladders** up to 99 different categories.
- **Generates Pairing List** for each category.
- **Prints complete Ladders** - 4, 8, 16, 32, 64, 128 entry
- **Prints Partial Ladder** at Round entered.
- **Prints Pairing List** for staging crew -- Easier to find entries and pair up. LARGE Font.
- **Prints names** under entry number if selected.
- **Prints blank Ladders** -- from 3 to 128 entries
- **Rebuild Ladder** - If edit is required for previous round entry number, ladder can be rebuilt
- **Screen Warnings** if qualifying list is newer than pairing list.
- **Automatically Fixes Ladder** if entry number in previous round was entered incorrectly.
- **Scans for Pairing mistakes** and warns operator if pair was run in error.

## Competition Index Control

Although this feature is specifically designed for the NHRA Competition Eliminator category, it can be used for any category that has a sanctioning body assigned index for multiple classes within the category. Penalties can be assessed for entries that infringe on the index automatically and can be adjusted for the entire category. Penalties are warned automatically after each round of competition and assessed manually by the operator. During the next round of competition, the entry that has been assessed a penalty will have the index automatically adjusted.

## Chicago Shootout

- **Must be set on Chicago Shootout in Category Editor** - All Entries run in Eliminations for a set amount of rounds.
- **Calculates the Number of Wins** per entry for each round.
- **Will Ladder the Entrants that have won the most # of Rounds** after the set amount of rounds have been run.
- **Only displays the Categories** that are set for Chicago Style Shootout.
- **Help Screen** describing Chicago Shootout with examples.

## Double Eliminations

All Losers from the first Category are loaded into the Double Elimination Category and then Qualified and Laddered according to the qualification mode set in the Category Editor.

- **Double Elimination Category** is always one or more rounds behind the first Category.
- **After each round that the first Category makes**, the losers from that round are sent into the same round of racing in the Double Elimination category.
- **The Double Elimination Category is Re-Qualified and Re-Laddered after each round.** Pairing Lists only are available for the staging lane personnel. There are no printed Ladders.

## Class Eliminations

This feature is used where there are Classes within a category such as Stock and Super Stock in the NHRA. Although this feature has not been fully completed and will be an ongoing project for 2013 during the update program, it will eventually run all classes within the category in a heads up elimination format with no effect on the Category Eliminator. The intent is for the final round of qualifying to also be the First Round of Eliminations for each Class with subsequent rounds of eliminations being run until each class has one Champion. There is also a feature for running multiple class eliminations as well. Class eliminations are run in a different eliminator mode which will not affect the regular Category Eliminations that a track normally runs.

## Points

- **Define Points** for Attendance, 6 Qualifying Rounds, up to 9 Elimination Rounds.
- **Points Awarded** for Round Win or Points can be Awarded when a Round has been lost.
- **Option** allows Points to be given to Buy Back Entrants.
- **Calculate and Save Race Day Points** -- can be edited at any time.
- **Race Day Totals can be Edited**
  - Delete the entire Category from Points for that day.
  - Buttons to Find a Racer
  - Add Racer or Delete Racer
  - Convert points to Comma Delimited text file.
- **Print Report** for review before adding to year totals.
- **Add Race Day Points** to Yearly Points total.
- **Print Year Reports:** Preview, Printer, HTML, or pdf Files by Category
- **Keeps track of Points days** used, that make up the Yearly Points File.
- **Will also Sort by a Reduced number of Points Days:** Example: 26 events out of 32 events. Takes the Entrants best Points days and adds to the Yearly Total.

## Team Points

If you enter a team initial ( 2 letter identification ) in the Racer Database under Team Initial on the first screen, when you run team points for that category, points will be assigned to everyone in the database with those Team Initials. You can run several different categories or one category at a time. The program will keep track of each racer in the same category, assign points by round ( Points per Round can be changed on the Main Screen -- up to 9 Rounds ), and report shows total points each team accumulates. Team Points is used when racers from different tracks compete for a Race Track Championship.

## Payouts

The Entry Fee is located in the Category Editor and is used by this program.

- **Calculates the Payout** to each race round winner ( round lost is the pay round ).
- **Payouts** - Winner, Runner-Up, Semi's and Round winner payouts are displayed.
- **Displays list of Racer's names and Win Position.** Displays Payout to each Race Round Winner.
- **Calculator** for Payout Estimating and Calculating.
- **Win Multiplier** to Increase / Decrease Winner Payout.
- **Displays** the number of Entrants in each Eliminator, Total Purse, and Total Payout.

## Administrator Editor

The Administrator Editor allows Editing of Entry Number, Race Type ( Time Trial, Qualification, Elimination), Category Number, Disqualification Status, and Win Status.

- **Automatically Calculates** the Qualification Position on Qualification Run Change.
- **Shows Race Competitor** on all Elimination Runs.
- **Software runs from the Administrator's PC** - Drag Race software automatically and permanently changes the results database.

## Announcer Program

- **Special Audio Feature** is used for advertisements and promoting using MP3s. Allows the announcer to setup a block of pre-recorded messages or advertisements. Can be used during downtimes to promote sponsors, concessions, important announcements, safety, or introduce a specific racer.
- **New Announcer Sound Effects:** 10 programmable buttons play sound clips that can be used to jest about things happening on the track or in the stands. Sound clips enhance the ability to keep the racers and fans involved, informed, and entertained. Example: Snoring sound when someone cuts a bad light.
- **New Audio Feature:** Preload MP3 of national anthem(s). Will play 1 or 2 anthems (selectable) with an adjustable pause between both. Plays off your PC audio output.
- **Automatically** follows the Drag Race Computer.
- **Can delay Screen Change for up to 30 seconds** (User Adjustable) after the win lights occur (current race is complete).
- **Easy Buttons on Top of Screen for Locating:**
  - Previous Race Screens.
  - Database Paths.
  - History and Current Run Information.
  - Qualifying Lists including Instant Qualifier, Ladders - updated on the fly, and Current Points List and Standings for all Categories and Competitors.
- **Blocks out Reaction Time on Elimination Runs** (User Selectable) so Announcer won't inadvertently inform the spectators.
- **Highlights RT in Red** on Red Lights
- **Shows Disqualification** and No Shows instantly on screen.
- **Provides Text File** for Real Time information for use with other remote applications.
- **Provides the Announcer** with Racer Database information on the Drivers.
- **Live Data** - Data Feed reports Real Time Data.

## Time Slip Program

The Time Slip Program Runs independent of the Drag Race Computer. We recommend the Time Slip Program to be operated on the Announcer P.C.

- **Continually Monitors Results for new Race Information** -- Automatically prints Time Slips.
- **Prints Time Slip** when Drag Race Operator saves results.
- **Set up for additional Printer to print lost Time Slips.** Can print any Time Slip at any time.
- **Main Time Slip Printer** can be set to Re-Print back from last printed slip in case of operator error.
- **6 Header Lines** and 4 Trailer Lines can be customized.
- **All Text Lines** can be edited to denote Track Timer Locations.
- **Prints Weather Information** if Database contains Weather Information.
- **Will Print Individualized Slips** -- Entry Number printed very Large at top of Time Slip.
- **Keeps Track** of the number of Time Slips printed.
- **Set on .001, .00001**, or follow Drag Race Computer accuracy.
- **Can Swap Tower** and Down Track Printer outputs by click of button.

## Table Repair

Repair Utility to Fix Databases in case of shut down error.

- Easy locate, detect problem, fix, and verify table repaired.

## BackUp

One button backup of all race day files into one backup location ( set location in Program paths).

- Can be set to Backup to a Memory Stick or another P.C.
- Final Panel shows the exact number of files copied in the Backup Procedure.

## Update ET/ MPH Information

- Program takes all of the current race day results information for each racer and loads new record runs for each Racer into the Racer Database for use by the Announcer.
- Program can be set to automatically look up new record runs and enter the new information into the racer database.
- Program displays the last time the data has been updated.

## Computer Setup

- **Setup Registration Codes** -- Key 1 and Key 2.
- **Setup com ports** for connection to Professional Gold Box Timer and Scoreboards.
- **Set Scoreboard Oscillation Time** if using 1 scoreboard per lane for ET and Speed.
- **Set the Type of Computer** - Drag Race Operator, Announcer, Administrator, Office, or Other.
- **Locate Mapped Network Drives** for each of the other computers on the LAN.

## Drag Race Program Description

Personal Computer connects to Professional Gold Box through RS-232 serial port on PC or with use of a USB to serial port adapter. Null modem cable provided with Gold box.

- **Provides Results Data** to the Administrator and Announcer computer through LAN (Local Area Network). Gets Category and Racer Data from the Administrator Computer via LAN.
- **Sensor Test and Tree Test** capability for trouble shooting and testing.
- **Time Location Settings** to provide flexibility for Sanctioning Body requirements.
- **Stores Weather Data and Racer Data** in the Results Database for use by other programs.
- **Displays Real Time Results** as the race is being conducted. Provides Real Time information for Announcer Program.
- **Sets the Race up by Category Default or can be overridden by the operator.** If Category is setup for .500 Full Tree, it can be changed to .400 Pro tree on screen quickly.
- **Displays Category Index or Class Index** on screen.
- **Ability to run Eliminations in an AUTO PAIRING** mode where pairs are setup from the Ladder List (provided by Administrator) and displayed in a list which can be "Clicked on" to enter into Race Que. When running auto pairing (Strict Ladder mode), the program will NOT let the operator race two Vehicles in error.
- **The ability to Re-run** if an error was made and to Alternate enter an Entry in Strict Ladder mode in First Round Only (the pairing list will be modified on the Administrator's computer if an Alternate Entry was made). Re-runs are saved and marked so they are ignored by other programs.
- **The ability to Change Immediately on the Screen:**
  - Breakout - On/Off
  - Dual Red - On/Off
  - Top bulb - Normal, Top Lock, or Oscillate
  - Super Start - On/Off
- **Scoreboards can be Shut Off** on the main screen by a mouse click.
- **Scoreboard Brightness** can be changed on main screen by a mouse click.
- **Allows 2 Pair of Vehicles to be "On Deck" ready to race:**

QUE 1 Left & Right QUE 2 L

- **Displays Auto Start Countdown Timer** and displays Auto Start Status -- (Auto Start Software on -- Auto Start Starter Switch is on).
- **Allows Back Bumping of Entries** on Race Screen if Entry Error. Saves all other information.
- **Displays Finish Location:** 60 foot, 330 foot, 660 foot, 1320 foot on screen.
- **Change from Hi Res (.00001 secs) to Low Res (.001 secs)** by button on screen
- **Auto Saves Results on Bump Que** ( loading entries onto race screen).
- **Displays Pre-stage and Stage ( Left and Right lane ) Status** via illuminated panels on screen.
- **Displays Margin of Victory in Seconds on Screen** ( Margin of Victory is always displayed in Winner's Lane -- Positive Value means the Winner was ahead - Negative Value means Behind
- **Displays Distance of Victory** on screen in Feet or Meters.
- **Auto Load Feature** allows Computer to automatically advance to Next 2 Competitors after the current race has Finished. Enters the Race Number as the Entry Number. Delay time between races is adjustable. Computer operator is not needed. Will operate Auto Start, but the tree state ( Full or Pro, .5 or .4) is fixed. Very useful for Test Sessions or Street Night. Race Number is displayed on the Dial-In Board and/or Scoreboard which indicates the time slip the racer should pick up at the time slip booth.



**Data Base paths and names**

Select the files for each DataBase and for Backup area:

Category Location:	Racers Location:	Results Location:	Backup Location:	Web Site Location:
c: []	c: []	c: []	c: []	c: []
C:\ portatree <b>RacerCatIndex</b>	C:\ portatree <b>RacerCatIndex</b>	C:\ Res2010 <b>100104</b>	C:\ <b>PortatreeBackup</b> 070228 070322 070811	C:\ <b>web</b>
category.DB index.db	racer.DB	100104.db	Backup Area: C:\PortatreeBackup Web Area: C:\web	

Category Database is "Category.db"  
 Index Database is "Index.db"  
 Racer Database is "Racer.db"  
 To make a new database, click below

Index Path: C:\portatree\RacerCatIndex\index.db  
 Category Path: C:\portatree\RacerCatIndex\category.DB  
 Racers Path: C:\portatree\RacerCatIndex\racer.DB  
 Results Path: C:\Res2010\100104\100104.db

☐ No Modification File

Last Update: May 1, 2009

## Portatree Drag Race Program Path Setup Screen

**Portatree Main Menu**

File Racer Entry About

Racer Information | Owner Information | Vehicle Information | Index Information | Accomplishments

Click In this Field to view Category List

Category 12 : **12 - SUPER STOCK ELIMINATOR**    ☒ Search all Categories

**497 Entries**

Entry #: **1960**

Racer #: **1960**

Member #: **351160**

Member Exp: **2/8/08**

Class: **SS/AH**

Registered: **Y**

License Exp: **3/31/07**

Points: **187**

Team Initial: **AB**

Other Points: **54**

Grade Points: **6**

First Name: **Al**

Last Name: **Smyth**

Phonetics: **Smith**

Address 1: **594 Blackstone St**

Address 2: **P.O. Box 206**

City: **Uxbridge** State: **MA**

Zip: **01569** Country: **U.S.A.**

Cell: **508-278-2199**

Phone: **508-278-2499**

Email: **tech@portatree.com**

Last modified: **02/22/2009 01:03 PM**

Print This Record Databases Used: C:\NHRADivisional\category.db C:\NHRADivisional\racer.db

Copy to Cat:

Last Update: July 15, 2009

## Portatree Drag Race Program Racer Entry Screen

Category Editor

Selected Category 7 : JR.MAJOR

Edit Category Name : JR.MAJOR Initials : JR.MA

Qualify by Package Use Index : No Index Category Index:

Qualify Mode : 2 Qualifying Run - Best RT Bump Spot : 128

Tree Parameters -- Speed : 500 Type : FULL

Type Finish : BREAKOUT SuperStart : OFF Help

DualRed : OFF Top Bulb Mode : NORMAL Report

Finish Line : 660 **NOTE:** Some fields require repeated mouse clicks to change the value

AutoStart : ON 300 Variable Delay (milliseconds - Min 100 - Max 900)

Auto Start Parameters Stage on Time : 900 Stage to Start : 700 Max Delay : 12000

Type Eliminator: NORMAL ELIMINATIONS

Exit Type Ladder: SPORTSMAN Entry Fee : 0 (No Decimal)

Save Restore Path: C:\portatree\RacerCatIndex\category.DB File Last Modified 1/18/2010 8:13:42 AM Last Update: January 1, 2010

Portatree Drag Race Program Category Editor Screen

Index Editor

Cde	Class	1/4	1/8	Adj'd	R-ET	R-mph	RecETHolder	RecMPHHolder
1	TF	0	0	0	4.428	336.15	Tony Schumacher	Tony Schumacher
2	FC	0	0	0	4.659	333.66	Tony Pedregon	Jack Beckman
3	PRO	0	0	0	6.536	211.69	Greg Anderson	Jason Line
4	PSM	0	0	0	6.870	197.45	Angelle Sampey	Andrew Hines
5	PM	0	0	0	0	0		
6	TAD	0	0	0	5.103	284.75	Bill Reichert	Bill Reichert
7	TAFC	0	0	0	5.454	265.74	Frank Manzo	Frank Manzo
8	SC	890	0	890	0	0		
9	SG	990	0	990	9.90	0	Minimum	Minimum
10	SST	1090	0	1090	10.90	0	Minimum	Minimum
13	JDA	0	0	0	0	0		
14	TS	0	0	0	0	0	Minimum	Minimum
15	TD	0	0	0	0	0		
16	CUST	0	0	0	0	0		
17	SPRO	0	0	0	0	0		
18	MC	0	0	0	0	0		

Adjustment Multiplier: 1/8 Adjust 1.000 1/4 Adjust

Double Click on Field that you would like to edit

Write to racers.db WRITE

Last: 1.000 Version 9.0.2 01/25/08

Records in .001 seconds

FILE LAST MODIFIED: 7/30/2008 1:58:04 PM

Help RESTORE Report Close

Portatree Drag Race Program Index Editor



**Data Log search tools**

R #	L	Entry	Win	DQ	Cat	Tp	Rd	Dial	RT	60ft	MPH	ET	Date	Time
1	L	JB20	W		40	Q	1	11.00	0.04264	4.728	50.85	15.70904	08/23	4:28:09 PM
2	R	JB3	L		40	Q	1	12.50	0.57311	2.713	54.74	12.20221	08/23	9:10:02 AM
3	L	BYE	L	2	40	Q	1	10.20	0.00000	0.000	0.00	0.00000	08/23	9:10:48 AM
4	R	JB1	W		40	Q	1	10.20	0.23580	2.304	63.83	10.27637	08/23	9:10:48 AM
5	L	JB6	W		40	Q	1	10.00	0.41677	4.923	32.19	21.03357	08/23	9:11:48 AM
6	R	BYE	L	2	40	Q	1	10.00	0.00000	0.000	0.00	0.00000	08/23	9:11:48 AM
7	L	JM5	W		30	Q	1	0.00	0.13361	1.965	72.58	9.00800	08/23	9:13:14 AM
8	R	JS24	L		30	Q	1	0.00	0.07331	2.764	49.07	13.66456	08/24	12:45:03 PM
9	L	JM4	L		30	Q	1	0.00	-0.06223	1.855	72.46	8.89437	08/23	9:14:11 AM
10	R	JM21	W		30	Q	1	0.00	0.11521	1.917	73.17	8.90196	08/23	9:14:11 AM
11	L	JMA8	W		30	Q	1	0.00	0.08540	1.703	83.80	7.85054	08/23	9:15:05 AM
12	R	JMA10	L		30	Q	1	0.00	0.13532	1.783	82.87	7.98932	08/23	9:15:05 AM
13	L	JMA11	L		30	Q	1	0.00	-0.05119	1.825	81.23	8.16971	08/23	9:16:10 AM
14	R	JMA7	W		30	Q	1	0.00	-0.00424	1.686	72.12	7.96443	08/23	9:16:10 AM
15	L	JM16	W		30	Q	1	0.00	0.11896	2.358	54.22	12.07370	08/23	9:16:51 AM
16	R	JMA2	L		30	Q	1	0.00	-0.03157	2.003	79.79	8.63370	08/23	9:16:51 AM
17	L	JMA9	W		30	Q	1	0.00	0.04595	1.935	72.00	8.98214	08/23	9:17:58 AM
18	R	JMA6	L		30	Q	1	0.00	-0.01278	1.658	82.57	7.72795	08/23	9:17:58 AM
19	L	JM22	L		30	Q	1	0.00	-0.12840	1.719	58.06	11.37359	07/13	11:26:35 AM
20	R	JM17	W		30	Q	1	0.00	-0.01986	2.114	62.59	10.20253	08/23	9:18:43 AM

Category: **DOUBLE CLICK ON ANY GRID TO BRING UP THE RACE SCREEN** ☒ RT as PerfectTree

**All**  **Racer: ALL** Found 1474 records **249 Entries**

☒ Time Trials  ☐ Display Race Competitor ☐ Winners Only

☒ Qualifiers  Sorted By:  
☐ By RT  
☐ By ET  
☐ By Dial  
☐ By Index  
☐ By MPH  
☐ By Pkg

Files Used: C:\portatree\RacerCatIndex\category.DB  
C:\portatree\RacerCatIndex\racer.DB  
C:\May2009\080823\080823.DB

Last Update: February 1, 2009 Results File Last Modified: 7/13/2009 10:27:10 AM

## Portatree Drag Race Program Datalog

**Mailing Labels**

**7734 LABELS**

Print by Category  
Enter Category #   
0 in this Field  
Prints all Racers

Only Addresses with Zip will Print.

Cat #	Entry #	FName	LName	Address1	Address2	City	State	Zip
12	1950	Wally	Clark	Po Box 182		Niagara Falls	ON	L2E 6Z3
12	1954	Bob	Wolkwitz	148 Old Kings Highway Nor		Darien	CT	06820-6
12	1956	Philip	Cecala	275 Mounts Mills Rd		Monroe Twp	NJ	08831
12	1960	Al	Smyth	594 Blackstone St		Uxbridge	MA	01569
12	1961	Carl	Chiarenza	130 Druid Dr		Mcmurray	PA	15317
12	1963	Edward	Alessi	53 Marbourne Rd		Bethpage	NY	11714
12	1967	David	Mann	18 H Putnam Rd		Charlton	MA	01507-1
12	1968	Chuck	Comella	888 Rabbit Rd		Sanibel	FL	33957
12	1972	Gregory	Porter	2951 Kings Hwy -v		Suffolk	VA	23435
12	1976	Louis	Lo Sapio	43 Bissett St		Sayreville	NJ	08872
12	1977	Michael	Iacono	97 Farm Rd East		Wading River	NY	11792
12	1979	John	Baughman	440 Eberts Lane		York	PA	17402
12	1981	Richard	Kay	413 Star St		East Meadow	NY	11554
12	1990	David	Barton	224 East Penn Ave		Robesonia	PA	19551
12	1993	Michael	Giuliano	95 Willowood Dr		Wantagh	NY	11793-1
12	1995	Robert	Carpenter	18 Perma Ct.		St. Catharines	ON	L2R 7K1
12	1996	Ronald	Riddick	1309 Warfield Dr		Portsmouth	VA	23701
12	2006	Charles	Dickerson	526 Hood Rd		Stockbridge	GA	30281-2
12	2008	Bobby	Warren	1805 E. MT. Gilead Ch Rd.		Clinton	NC	28328
12	2010	Jim	Smiley	101 Tanglewood Ln		Springfield	TN	37172-4
12	2012	Pat	Clifford	2460 Via Genova		Apopka	FL	32712
12	2014	Dan	Steed	4846 Radnor Rd		Radnor	OH	43066-9
12	2016	Jack	Huff	2900 Lyndale Dr		Nashville	TN	37207
12	2018	Jimmy	Bridges	1628 Ordway Place		Nashville	TN	37206

02/04/07

## Portatree Drag Race Program Print Mailing Labels Screen

Points

File Points Reports Paths Special Help About

# PORTATREE TIMING SYSTEMS

## Points Processing

Racer.db Location: C:\NHRAFILES\racer.db  
 Points.db Location: C:\Portatree\POINTS.DB  
 Latest Results Location: C:\Res2007\070811\070811.DB  
 Event Points Allocated to: C:\Res2007\070811\PT070811\PT070811.DB  
 Yearly Points File: C:\Res2008\PtsTotal2008.db  
 Web Target Area: C:\NHRADivisional

Locate Points.db    Define Round Points    Calculate Race Day Points    Assign Yearly

☐ Allow Buybacks to Receive Points    **AWARD TO WINNERS**    Help - Award Winners or Losers

Exit

Last Modification Date: 06/02/08

Portatree Drag Race Program Points Assignment Screen

MainScreen

PATH SETUP    RACE HISTORY Race Date    PREVIOUS Runs for Today    PREVIOUS RACE SCREENS    **CURRENT RACE SCREENS**    QUALIFYING LADDERS    EXIT

## Portatree Raceway

### 10 - SUPER STREET Qualifying Round 3

NEXT !    Left Lane    Data Update    Right Lane

Phonetics    Drew Wonderly    NAME Fred Ebert    Phonetics

Hurley    NY    18    ENTRY 101    Saratoga Springs    NY

WIN    BREAKOUT    DISQUALIFIED    10.90    INDEX 10.90    DISQUALIFIED    BREAKOUT    WIN

10.90    DIAL 10.90

RT    60    330    660    MPH 1    1000    1320    MPH 2    MOV    DOV (In Feet)

Car: Info: 70 Chevy Z28    Motor:    A1:    A2:    A3:    A4:    A5:    A6:    A7:    A8:    Occupation:    Own:    OwnAdd:    Sponsor:    Points: 0 Div: 0 Age: HP: 0/0    Spouse:    Kids:    Best: 64.998 @ 0.00 Prev: 64.999 @ 0.00    Interests:

Car: Info: 0    Motor:    A1:    A2:    A3:    A4:    A5:    A6:    A7:    A8:    Occupation:    Own:    OwnAdd:    Sponsor:    Points: 0 Div: 0 Age: HP: 0/0    Spouse:    Kids:    Best: 64.998 @ 0.00 Prev: 64.999 @ 0.00    Interests:

John Cartin    904    10.90    NEXT UP    911    10.90    Lou Perione

Portatree Drag Race Program Announcer Race Screen



## SUPER STOCK

Order For Qualifying after 5th Round

32 Entries

Psn	Entry #	Rnd	Driver	Class	Index	ET	Qr/Un
1.	1428	5	P. Ricci	SS/AM	9.45	8.28702	-1.16298
2.	1043	5	A. Ditocco	GT/FA	11.10	9.95323	-1.14677
3.	1193	2	J. Gunn	SS/KA	11.55	10.43436	-1.11564
4.	106	2	J. Roell	GT/FA	11.10	10.02715	-1.07285
5.	1030	3	G. DesJardins	SS/FA	10.75	9.71031	-1.03969
6.	1201	5	L. Miranian	SS/DA	10.50	9.46129	-1.03871
7.	1129	5	R. Porpora	SS/B	10.20	9.19313	-1.00687
8.	1544	5	J. Cannata	GT/DA	10.80	9.81043	-0.98957
9.	1787	5	D. Linke	GT/LA	11.85	10.86467	-0.98533
10.	1140	5	T. Boucher	GT/BA	10.55	9.56725	-0.98275
11.	1481	4	K. Hanley	GT/BA	10.55	9.59074	-0.95826
12.	11	5	J. Santangelo II	GT/HA	11.35	10.39634	-0.95366
13.	1194	5	S. Sparago	GT/MA	12.05	11.12590	-0.92410
14.	185	5	J. Mendillo	GT/G	11.05	10.13495	-0.91505
15.	1027	3	M. La Brecque	GT/TC	11.40	10.52485	-0.87515
16.	1077	5	P. Aubin	GT/GA	11.20	10.33046	-0.86954
17.	1014	5	G. Sutherland	SS/MA	12.15	11.28808	-0.86392
18.	1041	5	G. Vignogna	SS/AM	9.45	8.58882	-0.86118
19.	1122	5	T. Boucher	GT/CA	10.70	9.84740	-0.85280
20.	1134	5	B. Lasko	SS/CS	10.85	9.80207	-0.84793
21.	1980	4	A. Smyth	SS/AH	9.80	8.96710	-0.83290
22.	1818	5	K. VanGorp	SS/GA	10.85	10.06855	-0.78345
23.	1653	5	M. Humphreys	SS/OA	12.80	11.82228	-0.77772
24.	1881	5	R. Kay	SS/BM	9.70	8.92973	-0.77027
25.	1417	5	R. Karaguezian	SS/LA	11.75	11.00190	-0.74820
26.	1034	5	L. Jewell	SS/DA	10.50	9.77539	-0.72461
27.	1378	5	J. Vignogna	SS/CA	10.35	9.68250	-0.68750
28.	1074	3	B. Ward	SS/JA	11.30	10.67257	-0.62743
29.	1395	2	Y. Perigny	SS/IA	11.00	10.40440	-0.59580
30.	1089	1	S. Negrini	SS/BS	10.05	9.48952	-0.58048
31.	1318	1	J. Hertline	SS/GA	10.85	10.29286	-0.55714
32.	1925	3	S. Falco Sr	GT/IA	11.50	11.04038	-0.45862



## Elimination Results for Category: 12 - SUPER STOCK

Eliminations -- Round: 1

Entry #	W/L	Class	Driver's Name	Qr	RT	ET	MPH	M O V
1034	L	SS/DA	L. Jewell	9.78	0.067	9.784	128.87	----
1378	W	SS/CA	J. Vignogna	9.70	0.080	9.708	135.69	0.01656
1041	W	SS/AM	G. Vignogna	8.58	0.004	8.594	140.80	0.11829
1653	L	SS/OA	M. Humphreys	11.81	-0.037*	11.817	110.65	----
1129	W	SS/B	R. Porpora	9.21	0.023	9.238	143.03	0.02187
11	L	GT/HA	J. Santangelo II	10.43	0.042	10.461	120.47	----
1395	W	SS/IA	Y. Perigny	10.41	0.027	10.419	123.20	0.07960
1193	L	SS/KA	J. Gunn	10.50	-0.037*	10.459**	124.57	----
1544	W	GT/DA	J. Cannata	9.91	0.066	9.953	134.47	0.04925
1318	L	SS/GA	J. Hertline	10.33	0.044	10.350	126.06	----
1122	W	GT/CA	T. Boucher	9.84	0.031	9.885	133.55	-0.02857
1134	L	SS/CS	B. Lasko	9.83	0.058	9.822**	134.41	----
106	L	GT/FA	J. Roell	10.06	0.025	10.059**	132.91	----
1417	W	SS/LA	R. Karaguezian	11.01	0.021	11.013	116.76	-0.00047
1140	W	GT/BA	T. Boucher	9.57	0.024	9.643	137.64	0.01088
165	L	GT/G	J. Mendillo	10.11	0.137	10.081**	131.92	----
1481	W	GT/BA	K. Hanley	9.63	0.008	9.615	137.94	0.02438
1925	L	GT/IA	S. Falco Sr	11.04	-0.019*	11.026**	118.24	----
1471	L			9.76	-0.001*	14.570	59.60	----
1818	W	SS/CA	K. VanGorp	10.09	0.067	10.098	127.85	4.73299
1089	W	SS/BS	S. Negrini	9.43	0.015	9.474	143.72	0.00852
1027	L	GT/TC	M. La Brecque	10.53	0.023	10.557	124.14	----
1787	L	GT/LA	D. Linke	10.87	-0.006*	10.914	122.42	----
1194	W	GT/MA	S. Sparago	11.10	0.068	11.127	118.24	-0.05685
1030	W	SS/FA	G. DesJardins	9.76	0.006	9.801	134.10	0.02994
1077	L	GT/GA	P. Aubin	10.34	0.086	10.330**	126.59	----
1074	L	SS/JA	B. Ward	10.68	0.166	10.644**	122.55	----
1981	W	SS/BM	R. Kay	8.91	0.022	8.904	137.40	0.11486

\* = Red Light \*\* = Break Out M O V = Margin Of Victory to .00001 seconds

Portatree Drag Race Program Qualifying List

Media Report for Elimination Results



Form3

Lebanon Valley Dragway

1588 Races

STOCK

PRIOR

NEXT

LAST

ELIMINATIONS

Back To SEARCH

John Gray

Hudson

MA

ROUND

Mike Farrell

7

East Nassau

NY

WIN

BREAKOUT

1587

DISQUALIFIED

1109

1348

DISQUALIFIED

1588

BREAKOUT

WIN

SCOTIA WOODWKG/STANDARD TUBE

10.00

DIAL

10.00

JOHN SHAUL RACING

1972

- .003

RT

.006

1971

Chev 350 Chev 1972

1.477

60

1.509

Dodg 383 Dodg 1971

4.442

330

4.559

7.014

660

7.171

94.64

MPH 1

93.33

9.283

990

9.460

11.445

1320

11.423

97.13

MPH 2

114.14

MOV

.01348

Tim Gray

DOV

1.920

John Shaul

(In Feet)

Portatree Drag Race Program Announcer Race Screen - Auto Update

Lebanon Valley Dragway

Back To SETUP

RACE SCREEN

START SEARCH

Tornabene LANE

SUPER STOCK

Hemmings LANE

Gregg

Sutherland

FIND

1014

Larry

Jewell

FIND

1034

Chicopee

MA

LEFT LANE - STARTING LINE

Ulysses

PA

RIGHT LANE - STARTING LINE

R #	Dial-In	RT	60 ft	MPH	ET	MOV	DOV	Pkg
171	0	.058	1.538	115.04	11.377	.00000		
422	0	.041	1.531	115.32	11.328	.00000		
682	0	.072	1.531	116.02	11.315	-2.85119	485.166	
1008	0	.001	1.528	116.18	11.286	5584470	0.000	
1286	11.30	.062	1.531	111.29	11.341	.00000		.103
1428	11.31	.064	1.533	115.93	11.304	-.05719	9.724	
1506	11.29	.079	1.527	115.13	11.347	-.14483	24.456	.136
1554	11.32	.011	1.535	112.45	11.324	.00000		.015
1574	11.32	-.003	1.537	115.20	11.341	.00000		

R #	Dial-In	RT	60 ft	MPH	ET	MOV	DOV	Pkg
163	0	.063	1.357	135.52	9.797	1.37131	237.227	
399	0	.083	1.365	136.04	9.788	.00000	0.000	
987	0	.048	1.354	135.94	9.775	1.26671	220.303	
1255	9.78	.067	1.353	128.87	9.784	.00000		.071
1439	9.77	.067	1.357	115.64	9.952	-.21529	36.514	.249
1507	9.78	.053	1.360	109.45	10.117	2.09935	282.287	.390
1551	9.78	.145	1.372	135.12	9.831	.06167	12.222	.196

TJ

Boucher

FIND

1122

Yves

Perigny

FIND

1395

Byfield

MA

FIND

QUE 1 - LEFT

St-tite

PQ

FIND

QUE 1 - RIGHT

All INFO

R #	Dial-In	RT	60 ft	MPH	ET	MOV	DOV	Pkg
177	0	.011	1.381	133.51	9.925	.00000		
412	0	.002	1.354	133.96	9.887	-.19505	38.322	
680	0	-.027	1.356	134.26	9.874	.00000		
1001	0	.022	1.347	134.63	9.847	.23891	45.048	
1265	9.84	.031	1.348	133.55	9.884	-.02657	5.204	.075
1433	9.89	.100	1.351	130.67	9.907	.01094	2.089	.117
1509	9.87	.024	1.354	129.19	9.937	.03322	6.246	.091
1552	9.86	.093	1.356	126.98	9.902	.00000		.135
1573	9.88	-.049	1.354	133.63	9.904	.04309	7.280	

R #	Dial-In	RT	60 ft	MPH	ET	MOV	DOV	Pkg
168	0	.029	1.382	123.38	10.440	-.53851	97.447	
409	0	.010	1.367	124.22	10.404	.00000	0.000	
690	0	.014	1.374	123.99	10.448	1057887	778.887	
991	0	.012	1.387	124.02	10.417	.00000		
1261	10.41	.027	1.377	123.20	10.419	.07960	14.383	.036
1437	10.41	.030	1.381	119.82	10.440	.01426	2.602	.060
1511	10.42	.008	1.389	121.41	10.448	-.02746	5.529	.036
1553	10.43	.042	1.374	123.18	10.435	.03236	5.846	.047

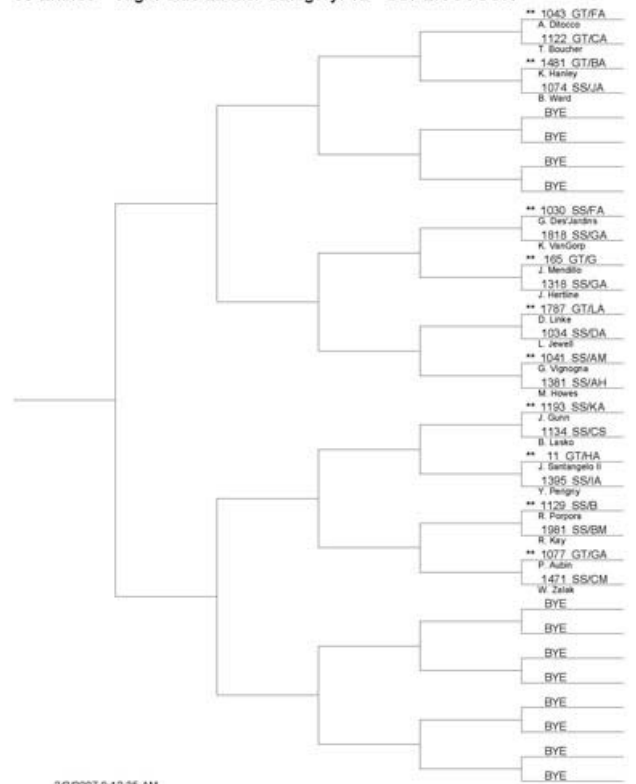
Portatree Drag Race Program Announcer Race History Screen - Auto Update



# 35 Entries -- Left Side Ladder Category: 12 - SUPER STOCK



# 35 Entries -- Right Side Ladder Category: 12 - SUPER STOCK



Portatree Drag Race Program Ladder Screens

## **PERSONAL COMPUTER SPECIFICATIONS**

### **Minimum Required Specifications recommended by Portatree - Top of the line PCs are not required!**

- Compatible with Windows™ XP and higher
- RAM:
  - Windows™ XP - 512 MB or higher
  - Windows™ 7 & higher - 2 GB or higher
- 3 or more USB Ports
  - A USB Port Expander is NOT recommended
  - If your Mouse and Keyboard use a USB connection, there must be at least 3 additional USB ports available

All computers purchased after 2005 will have a large enough hard drive and fast enough processor to run the Portatree software. If your computer is more than 10 years old, we recommend calling Portatree to verify that the software will run properly on the computer.

**NOTE:** Portatree recommends using the computers exclusively for running races. Installing additional software or connecting the computers to the internet will cause them to slow down over time and may impact performance.

# Portatree Scoreboards

Portatree Scoreboards are high quality, modular displays setup in an “88.8.88” format. The digits are housed in aluminum enclosures that are coated black for years of outdoor use. Up to 4 displays can be networked together to display reaction time, elapsed time, or MPH/KPH. Network addresses are preset, allowing race operators to quickly setup and communicate with the scoreboards upon arrival! Five brightness settings are supported, allowing the race operator to easily control brightness from software. The displays can be mounted on poles or flat surfaces. Contact Portatree for additional information!

## Each Scoreboard Includes:

- 5 digits and 2 decimals with drivers
- Network control card
- Power Supply (110/220V compatible)
- Aluminum enclosures for digits and decimals (coated black)
- Aluminum frames to connect digits and decimals (coated black)

## Features:

- Modular design for quick setup and low cost shipping
- 5 brightness settings (change for day/night use)
- Compatible with Portatree Economy and Professional Drag Race Software
- Compatible with Race America, Compulink, Chrondek, AMT/Optec, Act One, and Daktronics scoreboard protocols

Digit Size	Digit Case Dimension	Decimal Case Dimension	Total Display Width
20 in.	24 in. x 14.75 in.	24 in. x 6 in.	85.75 in.
32 in.	38 in. x 23.5 in.	38 in. x 9.5 in.	136.5 in.
52 in.	62 in. x 38.5 in.	62 in. x 15.5 in.	223.5 in.

Digit Size	2 Displays	4 Displays
20 in.	\$6,000	\$10,000
32 in.	\$10,200	\$18,000
52 in.	\$18,000	\$32,000

[info@portatree.com](mailto:info@portatree.com)  
(800) 541-7613 x503  
(508) 278-2499 x503

## P.C. Weather Center Deluxe

### Features

- Records & displays Temp to 0.1° F, Pressure to 0.01 inHg & Humidity to 1%
- Records & displays Wind Speed to 0.1 MPH & Direction in degrees (Wind unit required)
- Corrected Density Altitude calculated and displayed in feet
- Logs & saves weather data at 1 minute to 24 hour intervals
- Log and comment on vehicle run data
  - Saves Dial-in, RT, 60ft, 330ft, 660ft, mid track MPH, 1000ft, 1320ft & MPH
  - Allows run data to be saved for multiple vehicles
  - Select & save weather data for each run
- Predicts ET or Throttle Stop for up to 3 vehicles
  - View ET prediction graphs & taylor graph line to best fit your vehicle
  - Set up to show wind effect on predicted ET (wind unit required)
- Compatible with the Eliminator Super 2000 (Not Included)
  - Download/upload weather and race data to the Eliminator
- Printable weather & race data screens

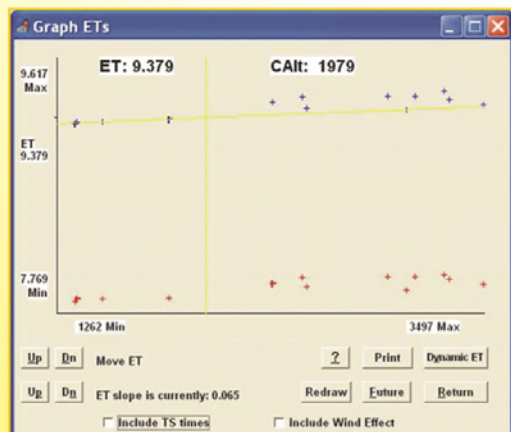
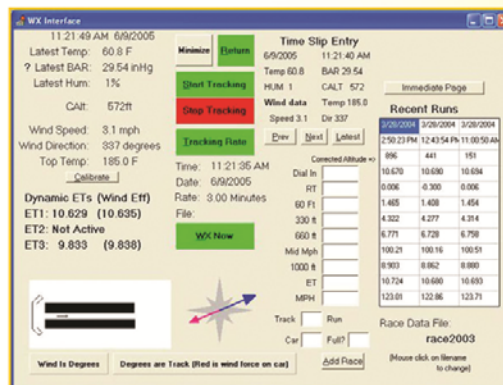


### Weather Info Screen

- Automatic ET prediction update on each weather change
  - Including wind effect to 0.001 seconds (wind unit required)
- Log race data while collecting weather
- Automatically log weather data
- Displays last 3 runs from the race data log
- View all weather collected throughout the day
- Graph weather data

### Requirements

- Windows™ compatible computer
- 1 USB or serial port
  - USB to COM port adaptor required for USB operation
- Mounting pole and hardware for Snap-In™ module and wind unit



### P.C. Weather Center Deluxe with Wind Unit \$799

- Wind Unit #6242B
- Snap-In™ Weather Module
- P.C. Weather Center Deluxe Software CD
- Connecting Cables
- 12 Volt Wall Transformer (110 AC Power Supply)

### P.C. Weather Center Deluxe No Wind Unit \$475

- Snap-In™ Weather Module #6200
- P.C. Weather Center Deluxe Software CD
- Connecting Cables
- 12 Volt Wall Transformer (110 AC Power Supply)

### P.C. Weather Center Deluxe Software \$225

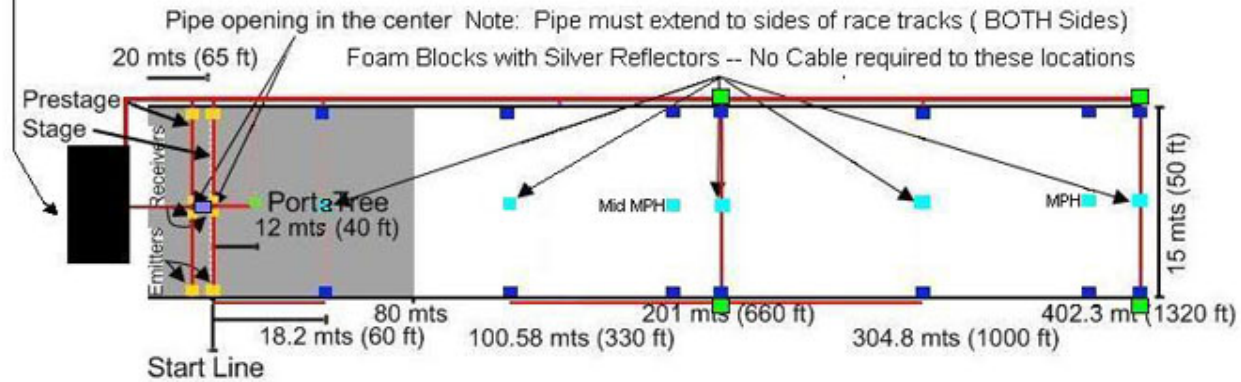
- Snap-In™ Weather Module required #6000
- P.C. Weather Center Deluxe Software CD
- Connecting Cables
- 12 Volt Wall Transformer (110 AC Power Supply)

NOTE: Packages do not include mounting poles or hardware for Snap-In™ module or wind unit



# Underground Pipe Layout

Tower Location ?? - Exact Location of the Operator is Required. There will be a Track Interface Located in the Tower Next to the Operator Location. All wires from the Start Line Junction Box and the Mid Track and Finish Line Junction Boxes MUST go to the Track Interface Box in the Tower.



■ Retroreflective Infrared Photo Sensors  
 ■ Receivers (requiring central opening in pipe) and Emitters

— Location of ALL UnderGround Pipes for the timing system cables

Note: Starting Line has 2 Under Ground Pipes -- One for Power - One for Timing System

Note: There MUST be an underground pipe at the Finish Line from One side to the Other side

Note: You MUST have an underground pipe at the 660 foot location for the Main Mid Track Cable

■ Mid Track and Finish line Junction Boxes ■ Start Line Junction box - Center of Start Line

NOTE: The Start Line cable can be run directly from the Tower to the start line in the Center of the Track. The Finish Line cables can go out the side of the tower and on one side of the track while crossing over to the junction boxes at Mid Track and the Finish line through the underground pipes.

Note: MPH Locations are exactly 66 Feet Back from the 660 Foot and 1320 Foot Locations





594 Blackstone Street -- P.O. Box 206 -- Uxbridge, MA 01569

Sales: 508-278-2499 Ext: 503 Tech: 508-278-2199 Ext. 508

Fax: 508-278-5887

Email: [info@portatree.com](mailto:info@portatree.com) Web Site: [WWW.PORTATREE.COM](http://WWW.PORTATREE.COM)

## New Tracks & Track Upgrades

**In order for Portatree to better meet your requirements, we request you answer this short question form and Fax or Email it to us before we begin building your system.**

1) **Is your track a Permanent or a Temporary setup?** \_\_\_\_\_

(Temporary track systems are setup and removed after every race)

(Permanent track systems, the cable is buried underground or protected and is not removed from race to race)

2) **If your track is a Permanent track** – A layout of your track is required and must include dimensions, track width / lane width, location of all underground tubes, location of up spout at the starting line, location of the Time Slip printer. The more information the better.

3) Is the Tower on the Left or the Right of the track? \_\_\_\_\_

4) Exactly how many feet / meters from the center of the starting line to where your computer operator will be located in the Tower? \_\_\_\_\_

5) What direction do the racers face when looking at the Christmas tree (N, S, E, W)?  
\_\_\_\_\_

6) What is the name of the track? \_\_\_\_\_

7) What Track Name and other Information would you like to see on the time slip?  
\_\_\_\_\_

8) What is the voltage that will be used at your race track? \_\_\_\_\_

Example: 110 Volt AC or 220 Volt AC

Note: If 220 Volt AC you must supply your own light bulbs for the Tree.

9) Contact Person's name: \_\_\_\_\_

Phone#: \_\_\_\_\_

Email: \_\_\_\_\_

Mailing Address:

Shipping Address:

\_\_\_\_\_

\_\_\_\_\_

\_\_\_\_\_

\_\_\_\_\_

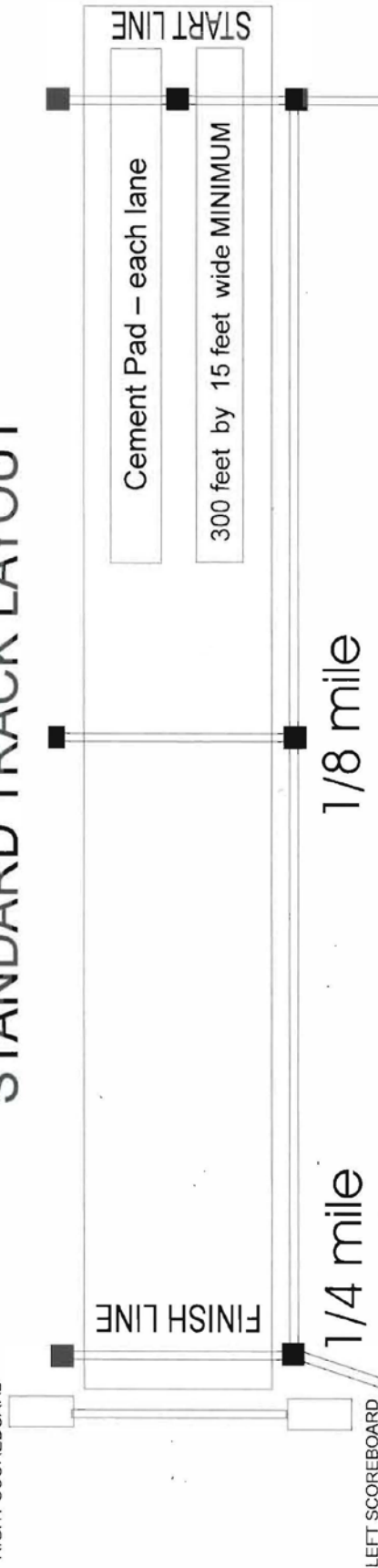
\_\_\_\_\_

\_\_\_\_\_



# STANDARD TRACK LAYOUT

RIGHT SCOREBOARD



**NOTES:** 1. Guard Barriers on both sides of track  
Minimum Track Width - 60 feet

2. SHUTDOWN 1/2 mile - Total Length of Track 3/4 Mile from Starting Line

3. Junction Box Location

- A. Center of Track at Start Line
- B. Outside of Track at 1/8 mile Left Lane
- C. Outside of Track at 1/8 mile Right Lane
- D. Outside of Track at 1/4 mile Left Lane
- E. Outside of Track at 1/4 mile Right Lane

4. Cables Specification to Location (ABOVE):

- A. 1 20 Conductor for Tree - 1 25 Conductor for Track
- B. 1 12 Conductor
- C. 1 12 Conductor
- D. 1 12 Conductor
- E. 1 12 Conductor

5. Cables for Scoreboard and Timeslip Printer  
Both Timeslip Printer and Scoreboard

**TOWER**

Location can be on either side of your race track

UNDERGROUND TUBES (PIPES)

WIRE HAS TO GO TO EACH LOCATION MARKED WITH THIS BLACK SQUARE !

The Information in this drawing is based on other race tracks and insurance regulations.

Please check with your sanctioning body and insurance carrier before your final design is complete !

**PORTA TREE**  
TIMING SYSTEMS

DRAWING IS  
**NOT TO SCALE**